

General Lab Products EU



Natural Winners

Eppendorf Liquid Handling Instruments:
Unrivaled in technology, efficiency and handling – for over 50 years



»Global Research, Eppendorf Engineering.«

Perfection down to the smallest detail – a principle that Eppendorf has adhered into the design and functionality of our liquid handling instruments and consumables. Today, devices and consumables from Eppendorf are used wherever precision, absolute reliability, and safety are necessary. And, Eppendorf's flexible systems offer a variety of options for meeting different laboratory requirements and applicational demands.

Eppendorf Liquid Handling Instruments

As the inventor of the microliter system, we at Eppendorf have more than 50 years of experience in precise manual and automatic pipetting/dispensing, and transferring of the smallest quantities of liquids.

Selection Guide

A broad variety of precision instruments from single-channel pipettes to automation. Choose the instrument that best fits your application, throughput, and the kind of liquid that needs to be transferred.

Air-cushion principle

Positive displacement principle

Automated liquid handling

> See page 4 for more information

PhysioCare Concept®

The use of our liquid handling products has been proven to reduce physical and psychological strain to a minimum by following the rules of the PhysioCare Concept.



> See page 26 for more information

Eppendorf Services

A comprehensive range of service programs including maintenance, seminars, application, and technical support as well as certification services build the basis for premium support.

epServices
for premium performance

> See page 27 for more information

Selection Guide

Air-cushion principle



Model	Eppendorf Research® plus	Eppendorf Reference® 2	Eppendorf Xplorer®/Xplorer® plus	Eppendorf Easypet® 3	Eppendorf Pipet Helper®
Application	Pipetting of aqueous liquids	Pipetting of aqueous liquids	Pipetting of aqueous liquids	Pipetting of aqueous liquids with serological and volumetric pipettes	Pipetting of aqueous liquids with serological and volumetric pipettes
Product type	Pipette	Pipette	Pipette	Pipette controller	Pipette controller
Operation	Mechanical, separate control button and ejector	Mechanical, combined control button and ejector	Electronic, separate control button and ejector	Electronic	Manual
Pipetting type	Air-cushion	Air-cushion	Air-cushion	Air-cushion	Air-cushion
Positioning	Ultra light weight and pipetting force for ultimate ergonomics	Reliability in robustness and results	Intuitive and fast pipetting	Overall ergonomic concept with new speed control for stress-free pipetting	A perfect instrument for inexperienced users because of its robust and intuitive design
Volume range	0.1 µL–10 mL	0.1 µL–10 mL	0.5 µL–10 mL	0.1–100 mL	0.1–100 mL
Available options	1-channel 8-channel 12-channel	1-channel 8-channel 12-channel	1-channel 8-channel 12-channel	1-channel	1-channel
RFID tracking	Yes (read option)	Yes (read & write option)	Yes (read & write option)	Yes (read option)	No
Autoclavable	Yes	Yes	Yes (lower part)	Yes (pipette adapter and aspirating cone)	Yes
Consumables	epT.I.P.S.® and other pipette tips	epT.I.P.S.® and other pipette tips	epT.I.P.S.® and other pipette tips	Eppendorf Serological Pipets and other volumetric and serological pipettes	Eppendorf Serological Pipets and other volumetric and serological pipettes
Purity grades of consumables	> Eppendorf Quality™ > PCR clean & sterile > Eppendorf Biopur® > Forensic DNA Grade	> Eppendorf Quality™ > PCR clean & sterile > Eppendorf Biopur® > Forensic DNA Grade	> Eppendorf Quality™ > PCR clean & sterile > Eppendorf Biopur® > Forensic DNA Grade	> Sterile > Free of detectable RNase & DNase > Free of detectable pyrogens > Free of detectable DNA > Forensic DNA Grade	> Sterile > Free of detectable RNase & DNase > Free of detectable pyrogens > Free of detectable DNA > Forensic DNA Grade
Page	8	10	12	14	14

Air-cushion principle

Standard pipettes work with an air cushion that separates the piston from the liquid. The air is displaced by the piston. The volume of the displaced air is equivalent to the volume of liquid aspirated.

Positive displacement principle



Multipipette® M4	Multipipette® E3/E3x	Biomaster® 4830	Varipipette® 4720	Varispenser® 2/2x	Eppendorf Top Buret™
Contamination-free dispensing (up to 100 steps per Combitip filling) of aqueous, viscous and volatile liquids	Contamination-free dispensing (up to 100 steps per Combitip filling) of aqueous, viscous and volatile liquids	Pipetting of aqueous, viscose and volatile liquids	Contamination-free pipetting of aqueous, viscose and volatile liquids	Single stroke dispensing of lyes, acids, bases, aqueous liquids or solvents	Titration of aqueous liquids
Dispenser	Dispenser	Pipette	Pipette	Bottletop dispenser	Bottletop burette
Mechanical	Electronic	Mechanical, combined control button and ejector	Mechanical	Mechanical	Electronic
Positive displacement	Positive displacement	Positive displacement	Positive displacement and air-cushion	Positive displacement	Positive displacement
Time savings for serial dispensing and high accuracy for problem liquids	Reduced strain for long dispensing series and highest volume flexibility	Contamination-free pipetting	Pipetting with reduced outside fault effects	Safe and easy dispensing of liquids without compromise	Continuous and plus-free manual titration
1 µL–10 mL	1 µL–50 mL	1–20 µL	1–10 mL	0.2–100 mL	0.1–999.9 mL
1-channel	1-channel	1-channel	1-channel	1-channel	1-channel
Yes (read option)	Yes (read & write option)	No	No	No	No
No	No	Yes	No	Yes	No
Combitips advanced®	Combitips advanced®	Mastertip	Eppendorf Varitips	–	–
> Eppendorf Quality™ > PCR clean > Eppendorf Biopur® > Forensic DNA Grade	> Eppendorf Quality™ > PCR clean > Eppendorf Biopur® > Forensic DNA Grade	> Eppendorf Quality™	> Eppendorf Quality™	–	–
16	17	18	18	18	18

Positive displacement principle

Sample liquid is aspirated into a tip in direct contact with the integrated piston. This system is independent from an air cushion. This offers the advantage of accurate dispensing of liquids regardless of density, viscosity, and volatility.

Automated liquid handling



epMotion® 96

Pipetting of aqueous liquids with 96 channels at once

Semi-automated
96 channel pipette
Electronic

Air-cushion

Intuitive and fast pipetting in 96 and 384 format

0.5–300 µL,
10–1,000 µL

2-position lifting table

No

No

epT.I.P.S.®
Motion reload system

> Eppendorf Quality™
> PCR clean
> PCR clean & sterile

22

epMotion® 5070

Serial pipetting of aqueous, viscous and volatile liquids in automated way for easy tasks on small foot print

Automated
Liquid Handling
Automation

Air-cushion

Reproducible, contamination-free, contactless pipetting at high precision and accuracy

0.2–1,000 µL,
1 & 8 channel

Automatic exchange of 2 dispensing tools, tablet or PC control

No, but chip tool identification and calibration warning

Yes (tools)

epT.I.P.S.®
Motion tips as racks or reloads

> Eppendorf Quality™
> PCR clean
> PCR clean & sterile

23

epMotion® 5070f

Serial pipetting of aqueous, viscous and volatile liquids in automated way in cell culture bench or fume hood

Automated
Liquid Handling
Automation

Air-cushion

Same as 5070 but operation in laminar flow bench or fume hood

0.2–1,000 µL,
1 & 8 channel

Automatic exchange of 2 dispensing tools, tablet or PC control

No, but chip tool identification and calibration warning

Yes (tools)

epT.I.P.S.®
Motion tips as racks or reloads

> Eppendorf Quality™
> PCR clean
> PCR clean & sterile

23

epMotion® 5073

Serial pipetting of aqueous, viscous and volatile liquids in automated way for routine tasks

Automated
Liquid Handling
Automation

Air-cushion

Same as 5070 but more flexibility with 6 deck positions and more features

0.2–1,000 µL,
1 & 8 channel

Same as 5070 plus gripper transport, 1 thermal module, ThermoMixer, magnetic separation HEPA filter & UV light

No, but chip tool identification and calibration warning

Yes (tools), UV light and HEPA filter (optional)

epT.I.P.S.®
Motion tips as racks or reloads

> Eppendorf Quality™
> PCR clean
> PCR clean & sterile

24

epMotion® 5075

Serial pipetting of aqueous, viscous and volatile liquids in automated way with highest flexibility and tool options

Automated
Liquid Handling
Automation

Air-cushion

Same as 5070 but full flexibility with 15 deck positions and even more features

0.2–1,000 µL,
1 & 8 channel

Same as 5073 plus 3 thermal modules, Automatic exchange of 4 dispensing tools, Vacuum separation

No, but chip tool identification and calibration warning

Yes (tools), UV light and HEPA filter (optional)

epT.I.P.S.®
Motion tips as racks or reloads

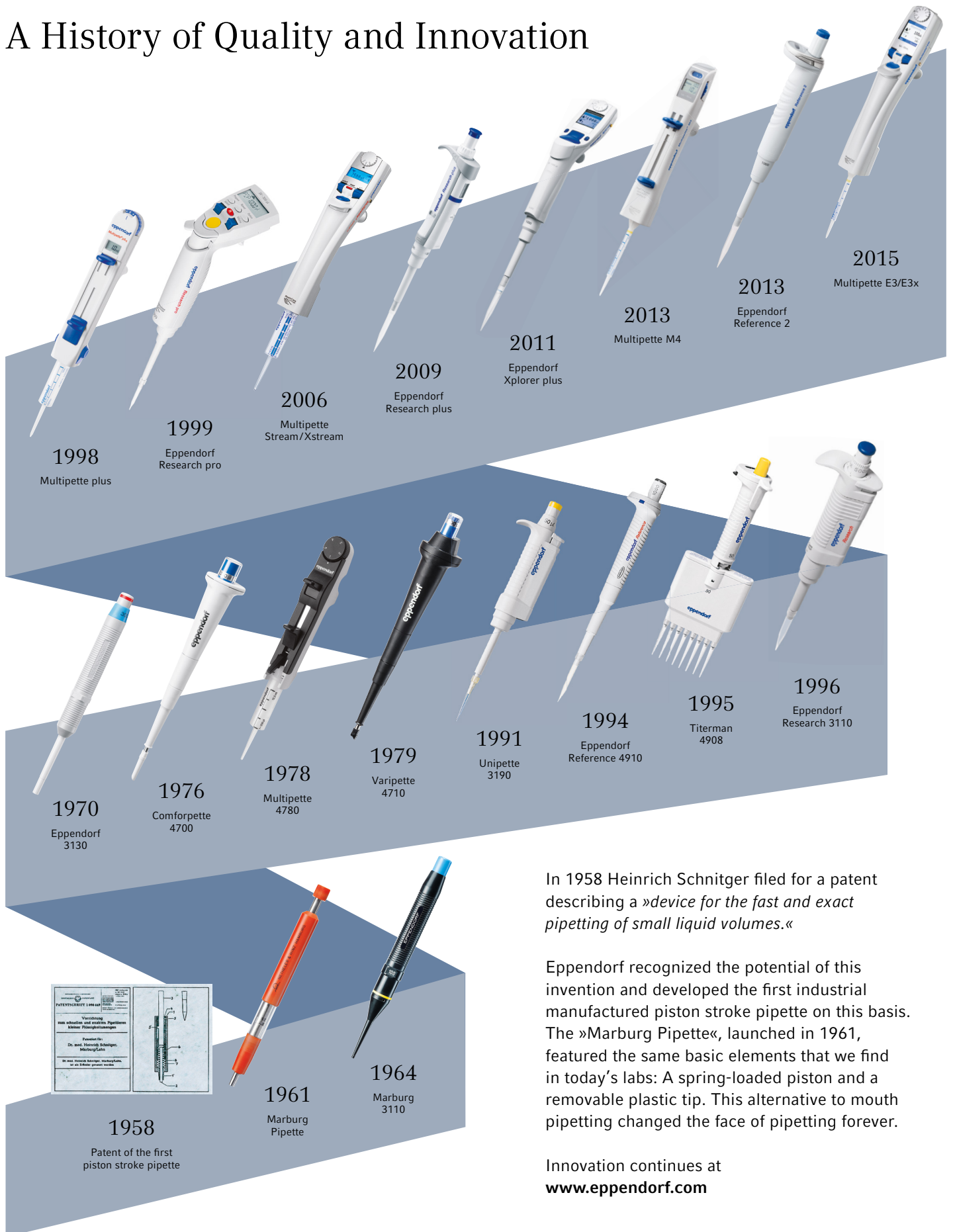
> Eppendorf Quality™
> PCR clean
> PCR clean & sterile

25

Automated liquid handling

Easy programming of liquid handling steps for aspiration, dispensing or multi-dispensing of defined liquid classes, temperature incubations, plate-mixing, vacuum, or magnetic bead separations.

A History of Quality and Innovation



1998
Multipipette plus

1999
Eppendorf
Research pro

2006
Multipipette
Stream/Xstream

2009
Eppendorf
Research plus

2011
Eppendorf
Xplorer plus

2013
Multipipette M4

2013
Eppendorf
Reference 2

2015
Multipipette E3/E3x

1970
Eppendorf
3130

1976
Comforpipette
4700

1978
Multipipette
4780

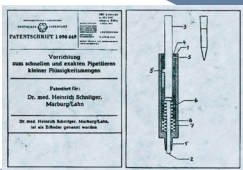
1979
Varipipette
4710

1991
Unipipette
3190

1994
Eppendorf
Reference 4910

1995
Titerman
4908

1996
Eppendorf
Research 3110



1958
Patent of the first
piston stroke pipette

1961
Marburg
Pipette

1964
Marburg
3110

In 1958 Heinrich Schnitger filed for a patent describing a »device for the fast and exact pipetting of small liquid volumes.«

Eppendorf recognized the potential of this invention and developed the first industrial manufactured piston stroke pipette on this basis. The »Marburg Pipette«, launched in 1961, featured the same basic elements that we find in today's labs: A spring-loaded piston and a removable plastic tip. This alternative to mouth pipetting changed the face of pipetting forever.

Innovation continues at
www.eppendorf.com

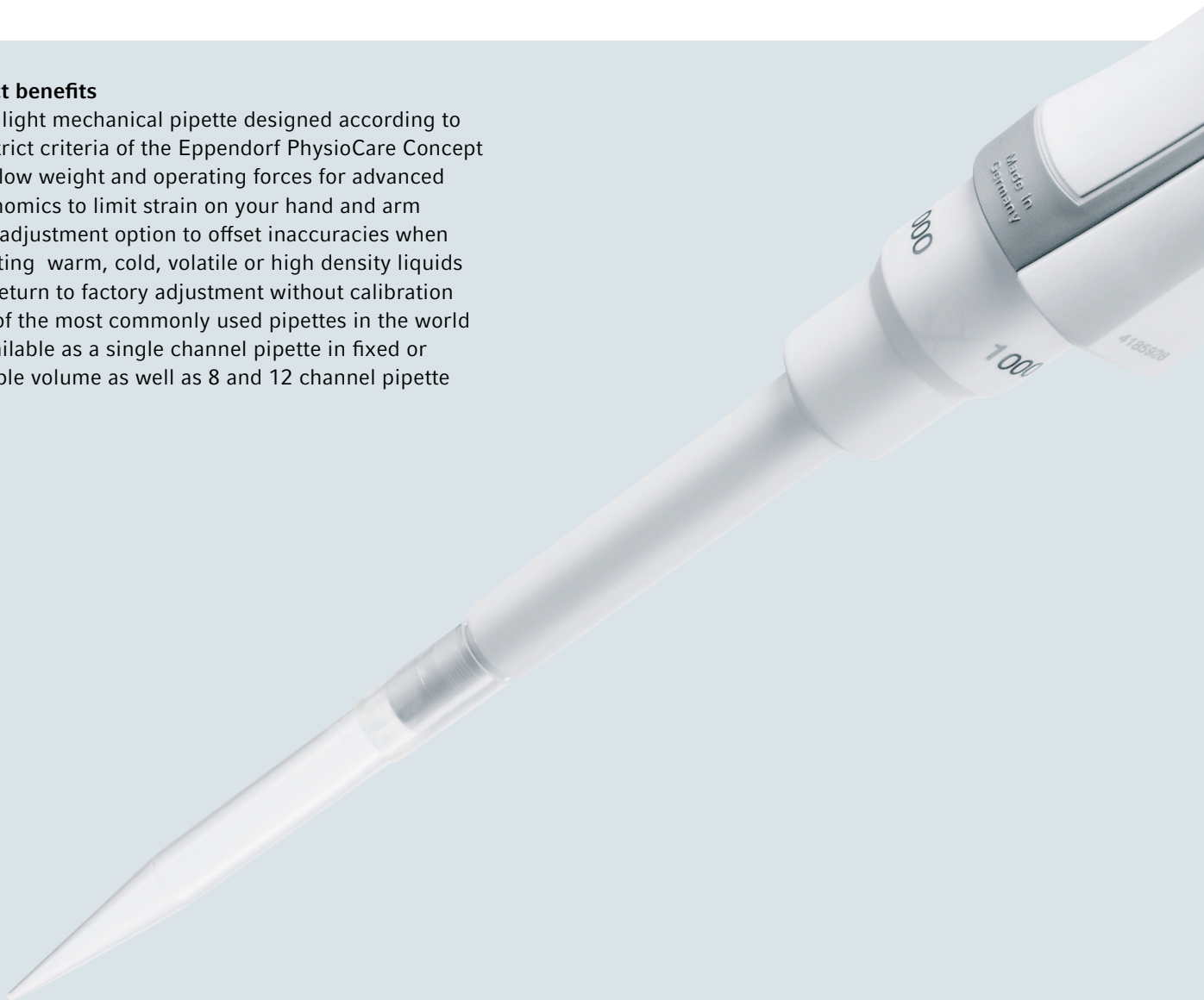
Eppendorf Research® plus

The Eppendorf Research plus combines over 50 years of innovation in liquid handling to provide you with one of the safest and most ergonomic pipettes available today. The Research plus is remarkably light, both in terms of weight and pipetting forces, setting new standards for ergonomic operation. It is comforting to know you are working with one of the most advanced pipettes in the world.

A spring loaded tip cone, a secondary adjustment option, an improved volume display – and all that in an ultra light, fully autoclavable pipette. The Research plus pipette will become an indispensable tool in your laboratory.

Product benefits

- > Ultra light mechanical pipette designed according to the strict criteria of the Eppendorf PhysioCare Concept
- > Very low weight and operating forces for advanced ergonomics to limit strain on your hand and arm
- > User adjustment option to offset inaccuracies when pipetting warm, cold, volatile or high density liquids and return to factory adjustment without calibration
- > One of the most commonly used pipettes in the world is available as a single channel pipette in fixed or variable volume as well as 8 and 12 channel pipette





reddot design award
winner 2009

High flexibility

Your new pipette should offer all the flexibility you need. Adjust your Research plus to your needs, autoclave the entire pipette or only the lower part. Choose among single channel, multi channel and fix-volume pipettes in different sizes.

Secondary adjustment option for various liquid classes

Adjust your pipette in seconds for better accuracy when pipetting various difficult liquids like ethanol or even when pipetting at high altitudes.

Advanced ergonomics

Feel the difference in weight, pipetting forces and the spring loaded tip cone.

Low tip attachment force

Achieve optimal tightness and minimal attachment forces with the Eppendorf Research plus. The spring loaded tip cone helps to reduce stress without sacrificing tightness.

Low tip ejection force

How many tips do you use per day? Even small differences in the tip ejection force make a big change if you do it day by day. The tip ejection force of the Eppendorf Research plus can be as low as 3.6 N, depending on the size and the force you use to fix the tip.

Positioning of control elements

The positions and shapes of all control buttons and displays have been optimized to ensure stress-free workflow and intuitive usage.



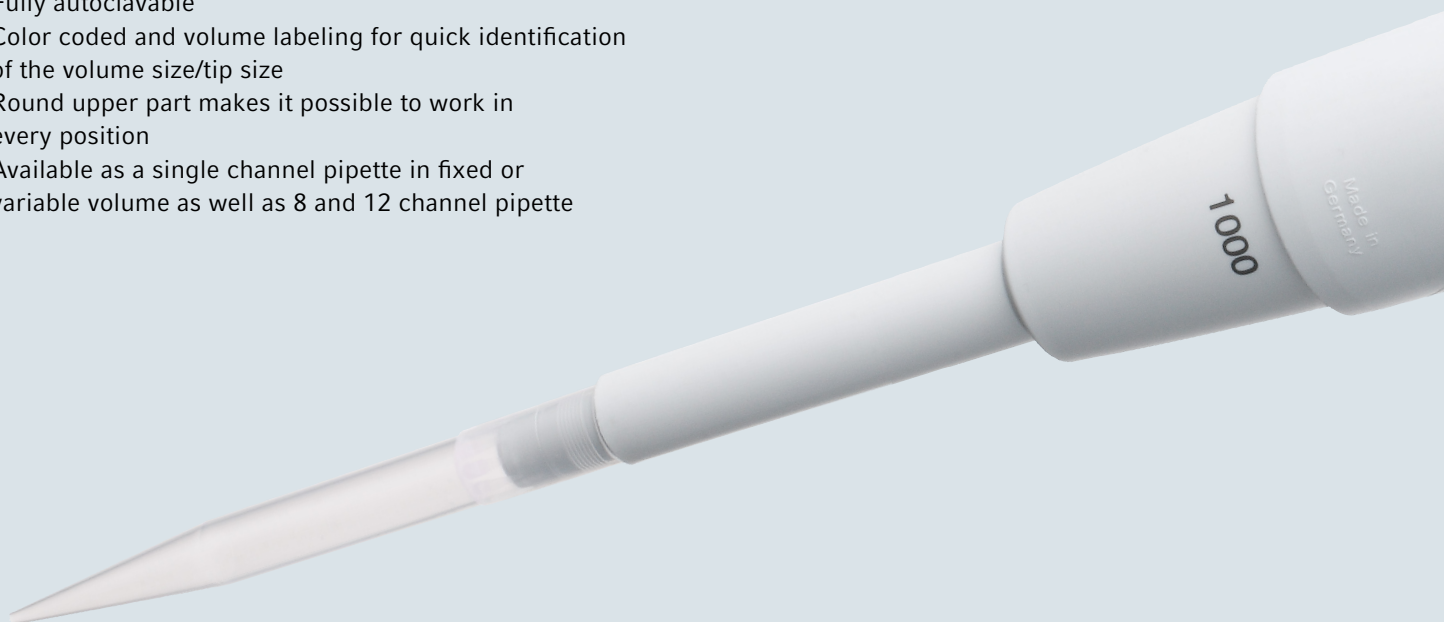
Eppendorf Reference[®] 2

The name »Reference« stands for extraordinary precision and accuracy, a long service life, and an ergonomic design. The Reference 2 boasts these proven premium characteristics and this operating philosophy with its innovative state-of-the-art technology.

The Reference 2 is the premium pipette of Eppendorf. Our best material and the latest technologies are implemented in this pipette, making it a reliable partner for you and your demanding work.

Product benefits

- > High precision and accuracy provides reliable results
- > 4-digit display for a more accurate volume setting (clearly visible from every angle)
- > Quick and secure volume setting, including volume lock
- > Fully autoclavable
- > Color coded and volume labeling for quick identification of the volume size/tip size
- > Round upper part makes it possible to work in every position
- > Available as a single channel pipette in fixed or variable volume as well as 8 and 12 channel pipette



> Have a look in our brochure with this QR Code!



User friendly secondary adjustment

For liquids other than aqueous solutions pipettes have to be adjusted. The Reference 2 provides easy possibility to do so, leaving the factory settings untouched. Reset back to manufacturer setting just as quick and easy.



Stainless steel upper part

The external edges made from stainless steel equip the Reference 2 with outstanding robustness at potential impact sites. It includes a quick volume setting and secure volume lock.



reddot design award
winner 2013



Spring-loaded tip cone

Attach every tip with the same force – regardless of the user. Achieve optimal tightness with low attachment and ejection forces.

Unique surface

Few grip marks and a smooth surface for comfortable working and simple cleaning. The Reference 2 is fully autoclavable without disassembling.

Sturdy upper handle

Guarantees long service life and increased robustness.

Heightened traceability

The serial number is printed on multiple components of the pipette. This prevents parts from being mixed up and indicates if one of the volume defining parts has been exchanged.

Eppendorf Xplorer®/Eppendorf Xplorer® plus

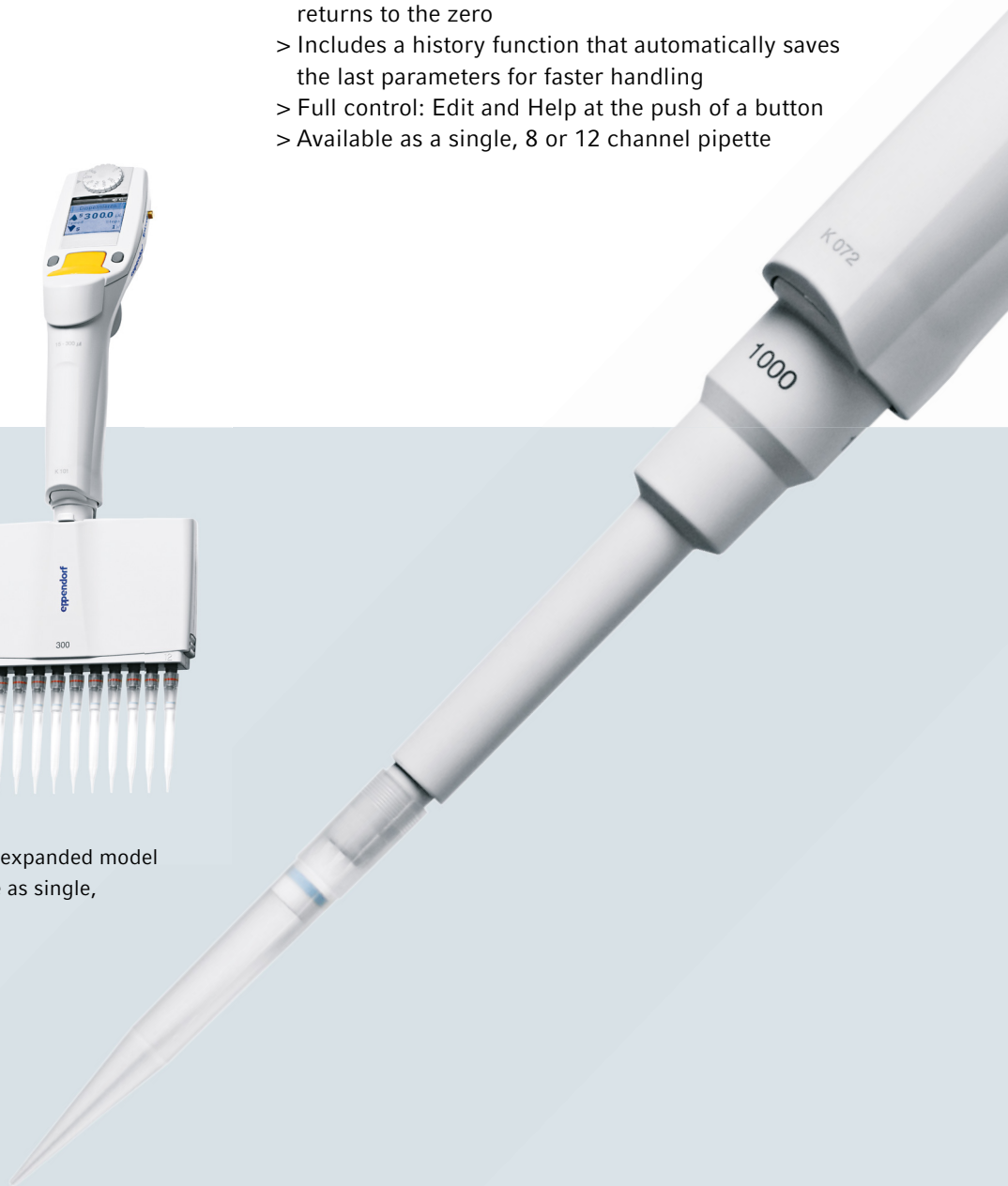
People who give 100% every day deserve the best tools and the best equipment. You work on demanding problems, and important decisions depend on the results of your work. With the Eppendorf Xplorer and Xplorer plus, your work achieves a new level of simplicity, precision and reproducibility, which means no more delays due to complicated programming or inflexible processes.

Product benefits

- > Intuitive handling: Selection dial and multifunction rocker
- > Optimal ergonomics: Designed according to Eppendorf PhysioCare Concept
- > High reproducibility: Spring loaded tip cone, individual adjustment, and a motorized piston
- > Ease of use: After tip ejection, the piston automatically returns to the zero
- > Includes a history function that automatically saves the last parameters for faster handling
- > Full control: Edit and Help at the push of a button
- > Available as a single, 8 or 12 channel pipette



Both the Eppendorf Xplorer and the expanded model Eppendorf Xplorer plus are available as single, 8 and 12 channel pipettes.





reddot design award
best of the best 2010

Expanded version

The Eppendorf Xplorer plus is the perfect choice for all users who simply need a little extra – more safety and speed every day! With its additional intelligent applications, adjustable fixed volumes and individual programming tasks, are performed much faster and easier. A password can be entered to guarantee the highest degree of protection for your programming and settings.

To ensure adherence to service intervals and thus guarantee the accuracy of your results, the Xplorer plus offers an integrated service reminder. You can choose a reminder based on the period of time or on the frequency of use.

Modern color display
All parameters
without submenus

Individual speed setting
Adjust speed to improve
precision and accuracy

Multifunctional rocker
With Up is up and down
is down functionality

Selection dial
All functions at a glance
and easily selectable

Multilingual menu
User interface in 9 languages

Function control softkeys
Edit and Help at the push
of a button

Innovative ejector
Electronically linked to
the piston control



Eppendorf Easypet® 3

It has never been easier to combine speed, safety, precision and comfort. Experience a new dimension of speed control and precision by intuitive, convenient speed adjustment. You will always be informed about your battery status with the vibrantly backlit LED battery meter.



Eppendorf Pipet Helper®

The Eppendorf Pipet Helper is a pipet controller which covers the range of bulb and graduated pipettes from 0.1 to 200 mL. The valve system allows for convenient operation without effort. Low weight and optimized design with ergonomic arrangement of functions.

Eppendorf serological pipets

The serological pipets are made of ultra-clear virgin polystyrene. They have a sterility assurance level of 10^{-6} and a certified absence of detectable pyrogens, DNA, RNase and DNase, non-cytotoxic.





Eppendorf Handling Solutions

Liquid Handling
Cell Handling
Sample Handling

To make your job in the lab easier and more efficient – with this goal in mind we are developing products and solutions in the areas of Liquid Handling, Cell Handling, and Sample Handling. Visit the Eppendorf Handling Solutions online sphere and dive into the area of your choice, learn new things, and have fun as well: www.eppendorf.com/handling-solutions



Cell Handling



Discover our comprehensive range of instruments and consumables for the manipulation, cultivation and analysis of cells. For handling cells, in addition to manipulators and injectors, incubators and consumables for cultivation as well as complete bioreactor systems for cell culture applications are also available. Corresponding detection systems are offered as required for subsequent photometric or fluorescence-based analysis.



Eppendorf Cell Culture Consumables

Experience a new dimension in cell culture with products that meet your needs.

- > Advanced contamination protection
- > Outstanding optical performance
- > Prevention of edge effect



Eppendorf Cell Imaging Consumables

Designed for sophisticated imaging and microscopy applications on expert level.

- > TC treated glass and film surfaces
- > Excellent signal-to-noise ratio
- > Extraordinary planarity



Eppendorf μCuvette G1.0®

Perfect tool for measuring high nucleic acid and protein concentrations in small volumes.

- > 1.5 – 10 μL sample volumes
- > Simple cleaning
- > Low self-absorption



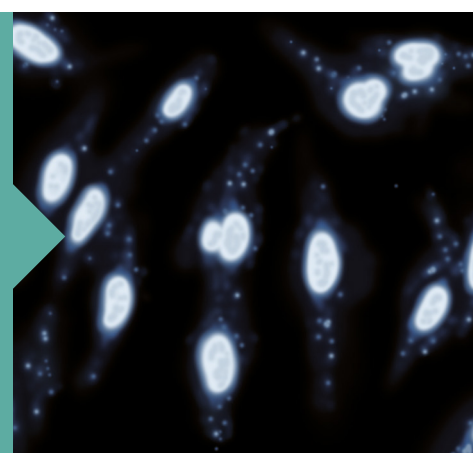
Eppendorf BioSpectrometer®

Compact spectrophotometers for measurements in the UV/Vis and fluorescence range.

- > UV/Vis from 200 to 830 nm
- > Freely selectable wavelengths
- > Temperature controlled

Mycoplasma – The Hidden Enemy in Your Cell Culture.

Find out challenging tips on
www.eppendorf.com/cellexperts



Multipette® M4

The Multipette M4 is ideal for long pipetting or dispensing series. It is also the tool of choice when working with liquids that possess demanding physical properties like high viscosity, density or volatility. With the Multipette/Combitip system, volumes are dispensed using the positive displacement principle. The liquid is directly dispensed without an air-cushion, ensuring highest precision regardless of the physical properties of the liquid.

Product benefits of the Multipette M4

- > Automatic Combitip advanced recognition eliminates time-consuming volume calculations
- > Dispensing up to 100 times without refilling the Combitip
- > Wide dispensing range: 1 μ L to 10 mL
- > Stress-free work via integrated step counter: Dispensing procedures can be continued error-free after an interruption or distraction
- > Fully emptied Combitip can be easily ejected with one hand using the operating lever



reddot design award
winner 2013



Due to using the positive displacement principle the Multipette M4 can overcome limitations of air-cushion pipettes



Save time – the Multipette M4 helps to make long dispensing series easier, safer, and faster

Multipette® E3/E3x

The new Multipettes E3 and E3x make your everyday pipetting routines faster and easier. They combine the advantages of a positive displacement dispenser with those of an electronic pipette. At the same time, they are very easy to use.

The Multipette E3 and E3x offer the same benefits as the M4.

Additional benefits of the Multipette E3 and E3x

- > Defined aspiration and dispensing speed for highest reproducibility of results (eight different speed levels)
- > Easy to read: Enlarged color display, optimized contrast, clear arrangement of all parameters
- > Store up to 225 different parameter settings to save programming time for routine applications
- > All selected parameters shown at one glance
- > Display/operating menu in 9 different languages
- > RFID chip contains all relevant data regarding the Multipette



Feature	Multipette E3	Multipette E3x
High speed aspiration and dispensing with motorized piston	<input type="checkbox"/>	<input type="checkbox"/>
Automatic Combitips advanced® tip recognition	<input type="checkbox"/>	<input type="checkbox"/>
One button tip ejection	<input type="checkbox"/>	<input type="checkbox"/>
Volume range from 1 µl to 50 ml	<input type="checkbox"/>	<input type="checkbox"/>
Li-ion battery	<input type="checkbox"/>	<input type="checkbox"/>
Illuminated display	<input type="checkbox"/>	<input type="checkbox"/>
Automatic dispensing	<input type="checkbox"/>	<input type="checkbox"/>
Pipetting	<input type="checkbox"/>	<input type="checkbox"/>
Dispensing	<input type="checkbox"/>	<input type="checkbox"/>
Aspirate (aspiration of supernatants)	<input type="checkbox"/>	<input type="checkbox"/>
Titrate	<input type="checkbox"/>	<input type="checkbox"/>
Sequential dispensing	<input type="checkbox"/>	<input type="checkbox"/>
Combined aspiration and dispensing mode	<input type="checkbox"/>	<input type="checkbox"/>

> Multipette E3 and Multipette E3x are the experts for long series pipetting and liquids with demanding properties: www.eppendorf.com/multipette-system



Biomaster® 4830

Contamination free pipetting in combination with Mastertips, the syringe-style, positive displacement tip, for guaranteed accurate pipetting of viscous solutions or liquids with high-vapor pressure.



Varipette® 4720

The Varipette is a continuously adjustable pipette that works according to the positive displacement principle. Thus the pipette is especially designed for precise pipetting of liquids with high vapor pressure or viscosity. The Varitip® P and S system are tailored to different vessels.



Varispenser® 2/2x

Varispenser 2/2x are ideal for dispensing aliquots of liquid from supply bottles. Available in 6 sizes for 0.2–100 mL and fully autoclavable. Varispenser 2x has a recirculation valve which prevents reagent loss while ventilating.



Eppendorf Top Buret™

The Eppendorf Top Buret sets standards for manual titration. Its pulse-free dispensing technique allows continuous dispensing of liquid with precision values within required limits.



Eppendorf Pipette Holder System

Carousels, stands and wall mount devices: The new Pipette Holder System is perfect for all users of handheld liquid handling instruments, who need a highly flexible system for their Eppendorf pipettes and Multipettes®. Carousels and stands provide a robust design with a small footprint.

To save precious bench-top space carousels carry both manual and electronic instruments. And only Eppendorf offers a charger carousel with intelligent charging electronics that carries up to 6 instruments.



Pipette Carousel 2 for manual pipettes and Charger Carousel 2 for electronic devices offer more flexibility and more capacity than ever before.

- > Rotatable pipette holders carry all current manual Eppendorf pipettes and most predecessors
- > Charger Carousel 2 for up to six electronic devices with magnetic power connector for fast and easy connection



Pipette Stand 2 and Charger Stand 2 for single instruments have a robust design and securely hold one manual or electronic device.

- > Large rubber feet protect stands from liquids spilled on lab bench
- > Charger Stand 2 with cord wrap functionality for more convenience



Pipette holder 2 for wall mounting, installation on a shelf above the bench or inside a biological safety cabinet.

- > Pictograms on all holders for clear assignment in the lab
- > Pipette holders are downwards compatible for Eppendorf Research and Reference pipettes

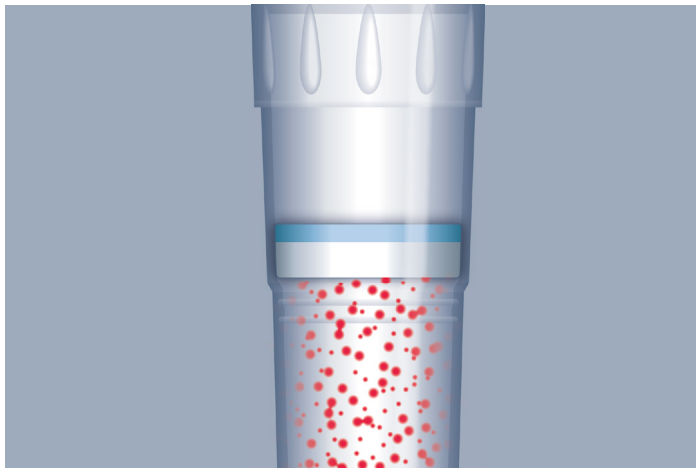
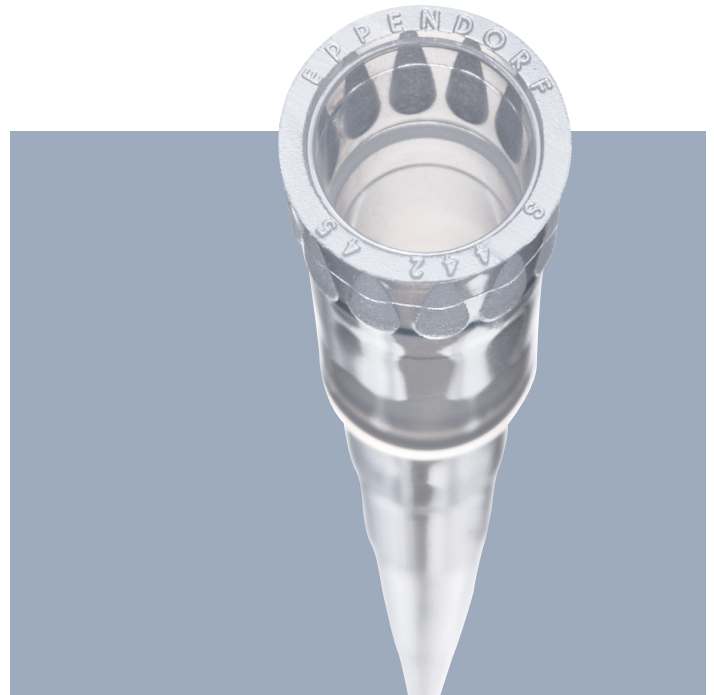
> >Have a look in our brochure with this QR Code!



epT.I.P.S.[®]

The fact that a tip fits onto a pipette cone does not say anything about the performance of the pipetting system comprising the components »Pipette and Tip«. The standard ISO 8655:2002 (1) considers pipettes and pipette tips as a system. Eppendorf as a system provider manufactures a system instead of single parts of it.

epT.I.P.S. pipette tips are available in purity grades of Eppendorf Quality, PCR clean, sterile and Biopur packed as bulk, reload, reusable box or one-use racks.



ep Dualfilter T.I.P.S.[®]

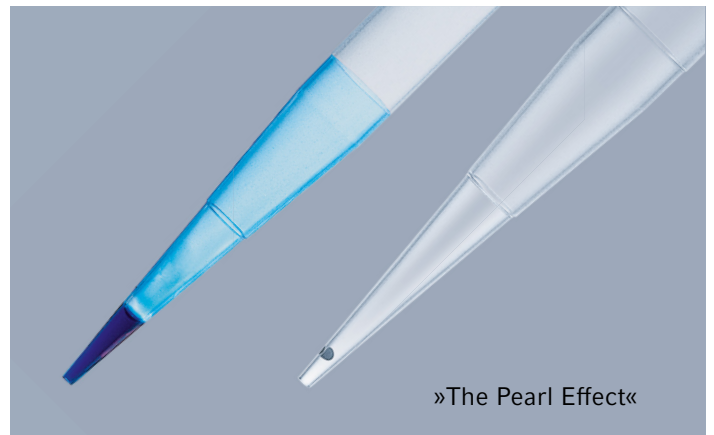
The Dualfilter with two filter layers provides dual protection against aerosols and biomolecules for pipette and sample. The premium Dualfilter has a certified efficiency of class E12 in accordance with EN 1822 – EPA/HEPA Standard (Efficiency Particulate Airfilter/High Efficiency Particulate Airfilter).

Certificate can be downloaded on www.eppendorf.com. Also available as ep Dualfilter T.I.P.S. SealMax for reliable protection from liquids.

epT.I.P.S.[®] LoRetention

Detergents or detergent containing liquids lower the liquid's surface tension. This phenomenon called »wetting« is compromising the accuracy of the dispensed volume.

epT.I.P.S. LoRetention offer an ultrahydrophobic surface which prevents the retention of these detergent-containing liquids and provides maximum sample recovery for highest reproducibility. epT.I.P.S. LoRetention are available in Eppendorf Quality and PCR clean purity as well as ep Dualfilter T.I.P.S. LoRetention in PCR clean/Sterile.



Combitips advanced®

In combination with the Multipette M4 and E3/E3x, Combitips advanced form an ideal system for a broad range of liquid handling applications.

Benefits of the Combitips advanced

- > Time savings for long dispensing/pipetting series
- > High-precision dispensing regardless of the physical properties of the liquid (e.g., viscosity, volatility, density, temperature...)
- > Prevention of aerosol contamination with hermetically sealed piston
- > Protection from radioactive and toxic substances
- > 9 available volume sizes (0.1 mL–50 mL) offer a maximum range of dispensing volumes
- > Individually color coded: Quick identification of the desired Combitips facilitates the workflow (color coding is also visible on packaging)



Elongated tips (for 2.5 mL, 5 mL, 10 mL)

Complete emptying of all common tubes prevents sample loss



Variety and selection

With 9 volume sizes (0.1 mL to 50 mL) and 4 purity grades (Eppendorf Quality™, PCR clean, Eppendorf Biopur®, and Forensic DNA grade) you will always find the perfect Combitip for your application!

> Choose the optimal Combitip for your volume with the help of our Combitip selection guide:
www.eppendorf.com/combitips-advanced



epMotion® 96

The Eppendorf epMotion 96 is an easy to use bench top system for high precision pipetting in 96- and 384-well plates. As an affordable solution it overcomes the limits of manual multichannel pipetting and will increase your productivity by faster and more precise simultaneous 96-well pipetting.

Features

- > Large volume range of 0.5–300 µL or 10–1,000 µL without changes to the systems
- > Auto-detect function for tip size
- > Intuitive and industry proven software concept and convenient touch screen control
- > Intelligent, preset applications: aspiration, dilution, multi-dispense, pipette and mix, reverse pipetting and more
- > Individual speed settings to match different liquid types
- > 2-position slider for quick access to source and destination
- > Compact design to fit under the laminar flow hood
- > Reduced risk of repetitive strain injury (RSI)

Applications

- > Replication and reformatting of 96- or 384-well plates
- > PCR set-up in whole plates
- > Cell seeding and media change
- > Reagent and compound addition
- > 384 wells by 4 times 96 well pipetting
- > Cell-based assays
- > ELISA and other immuno-assays in plates
- > Biochemical assays



> Watch our video for easy operation of epMotion 96 on our YouTube channel

epMotion® 5070

Our small member of the epMotion family is the most compact solution for accurate and reproducible automated liquid handling. This makes the epMotion 5070 a perfect match for any routine application in your laboratory.

Features

- > 4 SBS/SLAS worktable and 3 virtual positions
- > Maximum pipetting accuracy from 200 nL to 1,000 µL
- > Automatic exchange of two dispensing tools
- > Use of 1-channel and 8-channel dispensing tools
- > Optical sensor*1 for detecting liquids, labware, tips
- > Completely contained housing including door safety mechanism (except for 5070f, laminar-flow version)
- > Option for EasyCon tablet or MultiCon PC controller by touch, mouse or keyboard, upgradable for barcode tracking and GLP software versions



Applications

- > Serial dilutions
- > Liquid transfer from individual tubes to plates
- > Assay set-up
- > Reformatting plates
- > Simple PCR set-up
- > Normalization of sample concentrations or volumes
- > Cell media exchange

*1 Patent US 6,819,437 B2



Compact 5070f version can be integrated in laminar flow cell bench.
Light barrier beam monitors the closure of the bench hood for safety

epMotion® 5073

The midsize epMotion 5073 are flexible systems for automating time-consuming and complex pipetting procedures with its intuitive software, making routine liquid handling tasks easier than ever. The pipetting procedure is more precise, reproducible, and fully standardized, making your workplace more ergonomic and safer.

Features

- > Same as 5070 plus
- > 6-position worktable
- > Option for gripper transport, 1 thermal module or Eppendorf MagSep™ 3D module
- > CleanCap option for UV decontamination and HEPA air filter
- > Optional MultiCon touch PC controller

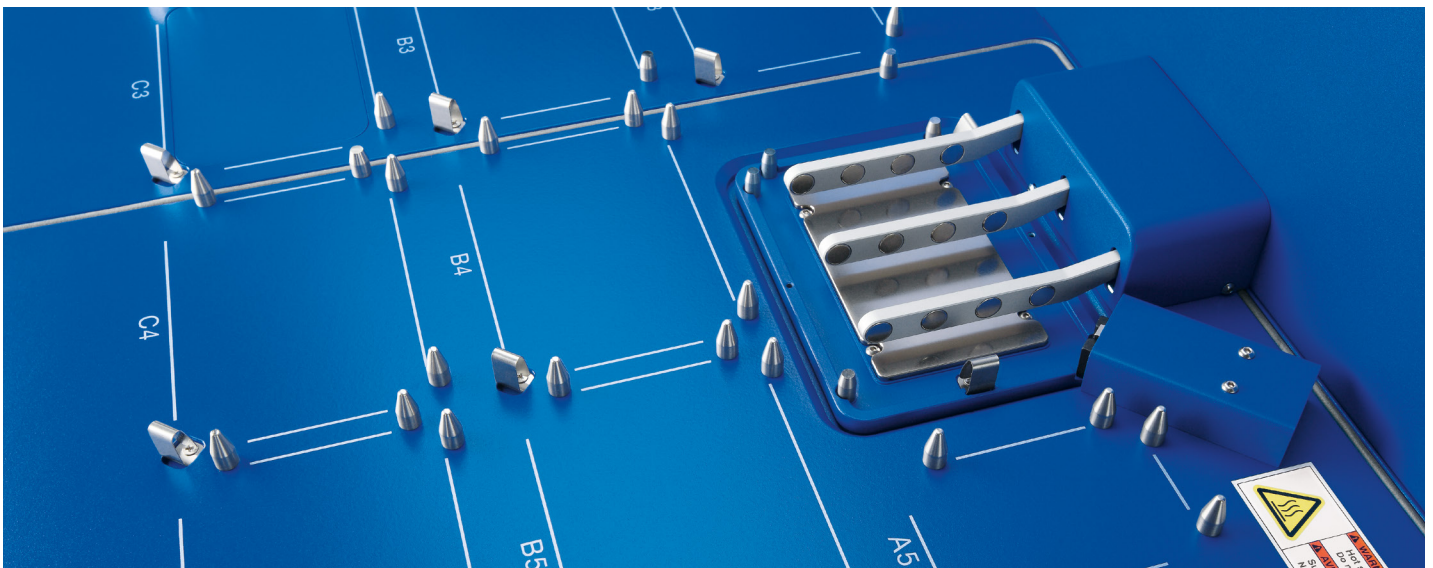
Applications

- > DNA and RNA purification
- > PCR set-up
- > Sample or reagent transfer
- > Sample mixing and temperature incubation
- > Assay set-up
- > Media change and other cell culture applications



Eppendorf MagSep™ 3D Technology

Combination of magnetic finger module and Eppendorf ThermoMixer facilitates magnetic separation, mixing and temperature control in one location



> Watch our video for flexible use of epMotion 5073 on our YouTube channel

epMotion® 5075

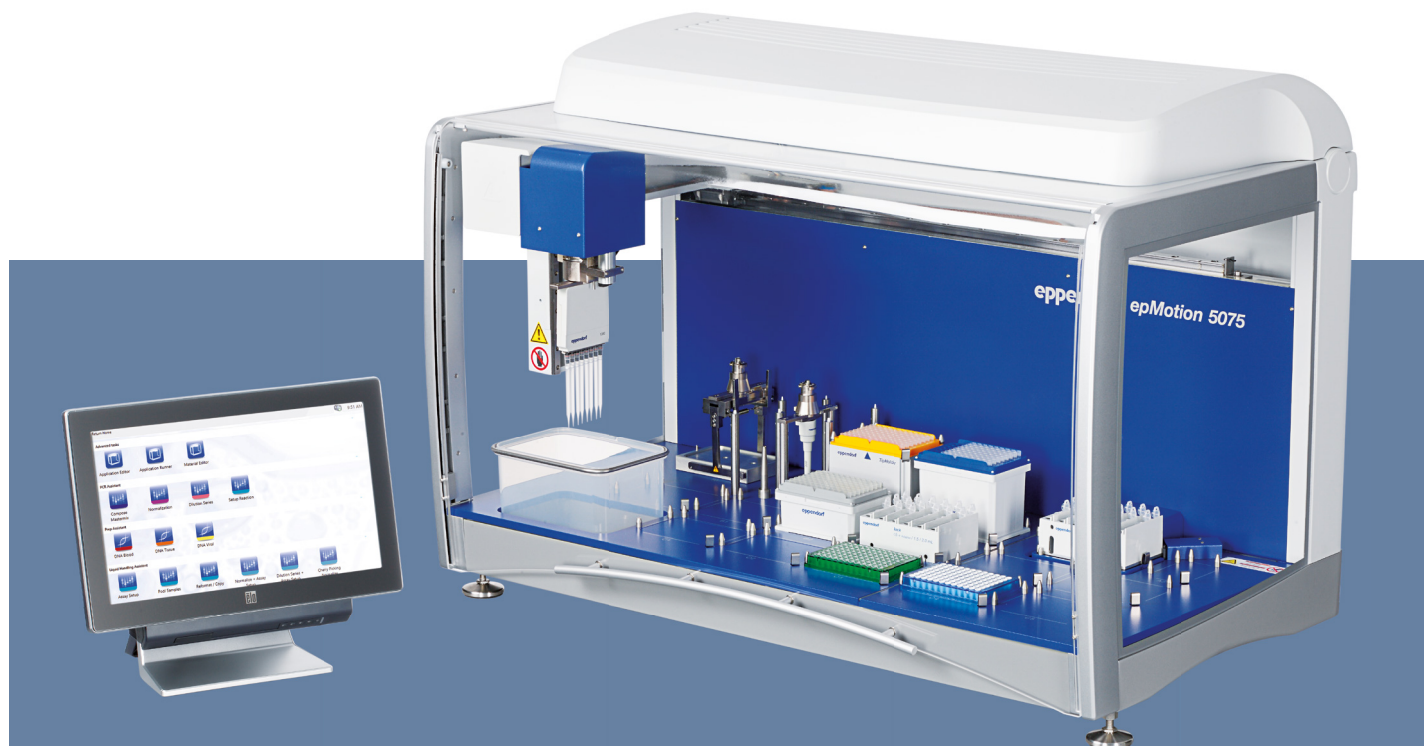
With 12 to 15 worktable positions and many additional features the epMotion 5075 versions have a higher application flexibility. The epMotion 5075 is the ideal solution for advanced liquid handling demands. It offers the same outstanding accuracy and precision as epMotion 5070 & 5073.

Features

- > Same as 5073 plus
- > Up to 15 worktable positions
- > MultiCon PC controller with simulation, network and software upgrade options
- > Automatic exchange of 4 dispensing tools
- > Option for gripper and 1–3 thermal modules
- > System control by touch, mouse, keyboard or network
- > Available Eppendorf ThermoMixer®, Vacuum manifold, and magnetic separation options
- > Available as CleanCap versions

Applications

- > NGS library preparation
- > Distributing reagents and serial dilutions
- > Sample transfer from individual tubes to plates
- > Solid phase extraction
- > Bead applications with mixing and temperature incubation
- > Sequencing and PCR clean-up
- > Nucleic acid purification



> A set of customer testimonial videos can be found on our YouTube channel



The Eppendorf PhysioCare Concept®

The mission of Eppendorf has always been to improve the living conditions of our customers. Nowadays, where people spend a lot of their time at work, the ergonomics of their tools and the whole work environment is becoming more important for your well-being. Thus the development of each Eppendorf pipette is based on three spheres that support the health of our customers.



Each of these spheres offers stringent ergonomic criteria which are directly involved in the users work process:



The Laboratory Workflow:

The PhysioCare Concept ensures general support to enhance processes around the lab and improve the results of the whole organization.

The Lab:

The PhysioCare Concept allows the uncomplicated integration of instruments in the lab as well as adhering to its specific requirements.

The User:

The PhysioCare Concept guarantees an ergonomic design and an optimized product performance according to the needs of the individual.



> Further information: www.eppendorf.com/physiocare
> Have a look in our brochure with this QR Code!

Supporting You – Eppendorf Services



Application
Support



Seminars
and Training



Technical
Support



Maintenance
and Certification

At Eppendorf, we are committed to providing reliable services to help you maintain premium performance, and maximum safety of your Eppendorf instruments. Our carefully designed service solutions are performed by our dedicated Application, Training and Technical Service teams worldwide.

Pipette Performance Plans

Eppendorf offers pipette calibration from quick calibration at an economical price to GLP custom-designed calibration services. Calibration according to ISO 17025 standards is available. We provide quality calibration, certification, maintenance and repair services for all major brands of pipettes.

Liquid Handling Training

The operator's experience is also very important for achieving good pipetting results. In our most popular training you will learn about the principles of pipetting ergonomics, correct pipetting techniques, routine maintenance and pipette calibration.

Especially the precision and accuracy of the pipettes and the dispensing tools of semi-/automated liquid handling devices are important for the quality and reproducibility of all your work results. With the Performance Plans from Eppendorf we offer you a range of quality maintenance and certification services for different user requirements.

epMotion® 96 Performance Plans

Maintaining and verifying your semi-automated pipette accuracy and precision makes sure your system still dispenses according to the manufacturer specifications. In the end you will receive assured results with your downstream applications and your valuable samples and reagents.

epMotion® Performance Plans

Our qualified service technicians will take care of the maintenance of your epMotion® to ensure its long life-time. Our Certification Services include all tests, calibration services and documentation needed for Installation and Operational Qualification (IQ/OQ)



> For more information, service ordering details and contact form please visit www.eppendorf.com/epServices



Eppendorf Research[®] plus

Eppendorf Research[®] plus (single-channel, variable volume)*1

Volume range	Color code	Volume	Systematic error*2		Random error*2		Order no.
0.1–2.5 µL	■ dark gray (for epT.I.P.S. [®] 10 µL)	0.1 µL	±48.0%	±0.048 µL	±12.0%	±0.012 µL	3123 000.012
		0.25 µL	±12.0%	±0.03 µL	±6.0%	±0.015 µL	
		1.25 µL	±2.5%	±0.031 µL	±1.5%	±0.019 µL	
		2.5 µL	±1.4%	±0.035 µL	±0.7%	±0.018 µL	
0.5–10 µL	■ medium gray (for epT.I.P.S. [®] 20 µL)	0.5 µL	±8.0%	±0.04 µL	±5.0%	±0.025 µL	3123 000.020
		1 µL	±2.5%	±0.025 µL	±1.8%	±0.018 µL	
		5 µL	±1.5%	±0.075 µL	±0.8%	±0.04 µL	
		10 µL	±1.0%	±0.1 µL	±0.4%	±0.04 µL	
2–20 µL	■ light gray (for epT.I.P.S. [®] 20 µL L)	2 µL	±5.0%	±0.1 µL	±1.5%	±0.03 µL	3123 000.098
		10 µL	±1.2%	±0.12 µL	±0.6%	±0.06 µL	
		20 µL	±1.0%	±0.2 µL	±0.3%	±0.06 µL	
2–20 µL	■ yellow (for epT.I.P.S. [®] 200 µL)	2 µL	±5.0%	±0.1 µL	±1.5%	±0.03 µL	3123 000.039
		10 µL	±1.2%	±0.12 µL	±0.6%	±0.06 µL	
		20 µL	±1.0%	±0.2 µL	±0.3%	±0.06 µL	
10–100 µL		10 µL	±3.0%	±0.3 µL	±1.0%	±0.1 µL	3123 000.047
		50 µL	±1.0%	±0.5 µL	±0.3%	±0.15 µL	
		100 µL	±0.8%	±0.8 µL	±0.2%	±0.2 µL	
20–200 µL		20 µL	±2.5%	±0.5 µL	±0.7%	±0.14 µL	3123 000.055
		100 µL	±1.0%	±1.0 µL	±0.3%	±0.3 µL	
		200 µL	±0.6%	±1.2 µL	±0.2%	±0.4 µL	
30–300 µL	■ orange (for epT.I.P.S. [®] 300 µL)	30 µL	±2.5%	±0.75 µL	±0.7%	±0.21 µL	3123 000.101
		150 µL	±1.0%	±1.5 µL	±0.3%	±0.45 µL	
		300 µL	±0.6%	±1.8 µL	±0.2%	±0.6 µL	
100–1,000 µL	■ blue (for epT.I.P.S. [®] 1,000 µL)	100 µL	±3.0%	±3.0 µL	±0.6%	±0.6 µL	3123 000.063
		500 µL	±1.0%	±5.0 µL	±0.2%	±1.0 µL	
		1,000 µL	±0.6%	±6.0 µL	±0.2%	±2.0 µL	
0.5–5 mL	■ purple (for epT.I.P.S. [®] 5 mL)	0.5 mL	±2.4%	±0.012 mL	±0.6%	±0.003 mL	3123 000.071
		2.5 mL	±1.2%	±0.03 mL	±0.25%	±0.006 mL	
		5 mL	±0.6%	±0.03 mL	±0.15%	±0.008 mL	
1–10 mL	■ turquoise (for epT.I.P.S. [®] 10 mL)	1 mL	±3.0%	±0.03 mL	±0.6%	±0.006 mL	3123 000.080
		5 mL	±0.8%	±0.04 mL	±0.2%	±0.01 mL	
		10 mL	±0.6%	±0.06 mL	±0.15%	±0.015 mL	

*1 Eppendorf Research[®] plus single-channel variable volume pipettes up to 1,000 µL include an epT.I.P.S.[®] box. The 5 mL and 10 mL versions include an epT.I.P.S.[®] sample bag.

*2 The error data, according to EN ISO 8655, only apply if original Eppendorf tips are used. Technical specifications are subject to change. Errors and omissions excepted.

Eppendorf Research® plus

Eppendorf Research® plus (multichannel, variable volume)*1

Volume range	Color code	Volume	Systematic error*2		Random error*2		Order no. 8-channel	Order no. 12-channel
0.5–10 µL	■ medium gray (for epT.I.P.S.® 20 µL)	0.5 µL	±12.0%	±0.06 µL	±8.0%	±0.04 µL	3125 000.010	3125 000.028
		1 µL	±8.0%	±0.08 µL	±5.0%	±0.05 µL		
		5 µL	±4.0%	±0.2 µL	±2.0%	±0.1 µL		
		10 µL	±2.0%	±0.2 µL	±1.0%	±0.1 µL		
10–100 µL	■ yellow (for epT.I.P.S.® 200 µL)	10 µL	±3.0%	±0.3 µL	±2.0%	±0.2 µL	3125 000.036	3125 000.044
		50 µL	±1.0%	±0.5 µL	±0.8%	±0.4 µL		
		100 µL	±0.8%	±0.8 µL	±0.3%	±0.3 µL		
30–300 µL	■ orange (for epT.I.P.S.® 300 µL)	30 µL	±3.0%	±0.9 µL	±1.0%	±0.3 µL	3125 000.052	3125 000.060
		150 µL	±1.0%	±1.5 µL	±0.5%	±0.75 µL		
		300 µL	±0.6%	±1.8 µL	±0.3%	±0.9 µL		

Eppendorf Research® plus (single-channel, fixed volume)

Volume	Color code	Systematic error*2		Random error*2		Order no.
10 µL	■ medium gray (for epT.I.P.S.® 20 µL)	±1.2%	±0.12 µL	±0.6%	±0.06 µL	3124 000.016
20 µL	■ light gray (for epT.I.P.S.® 20 µL L)	±0.8%	±0.16 µL	±0.3%	±0.06 µL	3124 000.032
10 µL	■ yellow (for epT.I.P.S.® 200 µL)	±1.2%	±0.12 µL	±0.6%	±0.06 µL	3124 000.024
20 µL		±1.0%	±0.2 µL	±0.3%	±0.06 µL	3124 000.040
25 µL		±1.0%	±0.25 µL	±0.3%	±0.08 µL	3124 000.059
50 µL		±0.7%	±0.35 µL	±0.3%	±0.15 µL	3124 000.067
100 µL		±0.6%	±0.6 µL	±0.2%	±0.2 µL	3124 000.075
200 µL	■ blue (for epT.I.P.S.® 1,000 µL)	±0.6%	±1.2 µL	±0.2%	±0.4 µL	3124 000.083
200 µL		±0.6%	±1.2 µL	±0.2%	±0.4 µL	3124 000.091
250 µL		±0.6%	±1.5 µL	±0.2%	±0.5 µL	3124 000.105
500 µL		±0.6%	±3.0 µL	±0.2%	±1.0 µL	3124 000.113
1000 µL		±0.6%	±6.0 µL	±0.2%	±2.0 µL	3124 000.121

*1 Eppendorf Research® plus multichannel variable volume pipettes include an epT.I.P.S.® box.

*2 The error data, according to EN ISO 8655, only apply if original Eppendorf tips are used. Technical specifications are subject to change. Errors and omissions excepted.

Accessories

Tip-Tub reagent reservoir , autoclavable reservoir for aspirating liquids with multichannel pipettes, 1 set = 10 reservoirs and 10 lids	Order no. 0030 058.607
Eppendorf TrackIT	3903 000.014

Eppendorf Research® plus 3-pack including epT.I.P.S.® box and Eppendorf ballpoint pen

Option 1: 0.5–10 µL, 10–100 µL, 100–1,000 µL	Order no. 3123 000.900
Option 2: 2–20 µL yellow, 20–200 µL, 100–1,000 µL	3123 000.918
Option 3: 100–1,000 µL, 0.5–5 mL, 1–10 mL	3123 000.926

Eppendorf Reference® 2

Eppendorf Reference® 2 (single-channel, variable volume)*1

Volume range	Color code	Volume	Systematic error*2		Random error*2		Order no.
0.1–2.5 µL	■ dark gray (for epT.I.P.S.® 10 µL)	0.1 µL	±48.0%	±0.048 µL	± 12.0%	±0.012 µL	4924 000.010
		0.25 µL	±12.0%	±0.03 µL	±6.0%	±0.015 µL	
		1.25 µL	±2.5%	±0.031 µL	±1.5%	±0.019 µL	
		2.5 µL	±1.4%	±0.035 µL	±0.7%	±0.018 µL	
0.5–10 µL	■ medium gray (for epT.I.P.S.® 20 µL)	0.5 µL	±8.0%	± 0.040 µL	±5.0%	±0.025 µL	4924 000.029
		1 µL	±2.5%	±0.025 µL	±1.8%	±0.018 µL	
		5 µL	±1.5%	±0.075 µL	±0.8%	±0.04 µL	
		10 µL	±1.0%	±0.10 µL	±0.4%	±0.04 µL	
2–20 µL	■ light gray (for epT.I.P.S.® 20 µL L)	2 µL	±3.0%	±0.06 µL	±1.5%	±0.03 µL	4924 000.037
		10 µL	±1.0%	±0.10 µL	±0.6%	±0.06 µL	
		20 µL	±0.8%	±0.16 µL	±0.3%	±0.06 µL	
2–20 µL	■ yellow (for epT.I.P.S.® 200 µL)	2 µL	±5.0%	±0.10 µL	±1.5%	±0.03 µL	4924 000.045
		10 µL	±1.2%	±0.12 µL	±0.6%	±0.06 µL	
		20 µL	±1.0%	±0.2 µL	±0.3%	±0.06 µL	
10–100 µL		10 µL	±3.0%	±0.3 µL	±0.7%	±0.07 µL	4924 000.053
		50 µL	±1.0%	±0.5 µL	±0.3%	±0.15 µL	
		100 µL	±0.8%	±0.8 µL	±0.20%	±0.20 µL	
20–200 µL		20 µL	±2.5%	±0.5 µL	±0.7%	±0.14 µL	4924 000.061
		100 µL	±1.0%	±1.0 µL	±0.3%	±0.3 µL	
		200 µL	±0.6%	±1.2 µL	±0.2%	±0.4 µL	
30–300 µL	■ orange (for epT.I.P.S.® 300 µL)	30 µL	±2.5%	±0.75 µL	±0.7%	±0.21 µL	4924 000.070
		150 µL	±1.0%	±1.5 µL	±0.3%	±0.45 µL	
		300 µL	±0.6%	±1.8 µL	±0.2%	±0.6 µL	
100–1,000 µL	■ blue (for epT.I.P.S.® 1,000 µL)	100 µL	±3.0%	±3.0 µL	±0.6%	±0.6 µL	4924 000.088
		500 µL	±1.0%	±5.0 µL	±0.2%	±1.0 µL	
		1,000 µL	±0.6%	±6.0 µL	±0.2%	±2.0 µL	
0.25–2.5 mL	■ red (for epT.I.P.S.® 2.5 mL)	0.25 mL	±4.8%	±0.012 mL	±1.2%	±0.003 mL	4924 000.096
		1.25 mL	±0.8%	±0.010 mL	±0.2%	±0.0025 mL	
		2.5 mL	±0.6%	±0.015 mL	±0.2%	±0.005 mL	
0.5–5 mL	■ purple (for epT.I.P.S.® 5 mL)	0.5 mL	±2.4%	±0.012 mL	±0.6%	±0.003 mL	4924 000.100
		2.5 mL	±1.2%	±0.030 mL	±0.25%	±0.006 mL	
		5.0 mL	±0.6%	±0.030 mL	±0.15%	±0.0075 mL	
1–10 mL	■ turquoise (for epT.I.P.S.® 10 mL)	1.0 mL	±3.0%	±0.030 mL	±0.6%	±0.006 mL	4924 000.118
		5.0 mL	±0.8%	±0.040 mL	±0.2%	±0.010 mL	
		10.0 mL	±0.6%	±0.060 mL	±0.15%	±0.015 mL	

*1 Eppendorf Reference® 2 single-channel variable volume pipettes up to 1,000 µL include an epT.I.P.S.® box. The 2.5 mL, 5 mL and 10 mL versions include an epT.I.P.S.® sample bag.

*2 The error data, according to EN ISO 8655, only apply if original Eppendorf tips are used. Technical specifications are subject to change. Errors and omissions excepted.

Eppendorf Reference® 2

Eppendorf Reference® 2 (multichannel, variable volume)*1

Volume range	Color code	Volume	Systematic error*2		Systematic error*2		Order no. 8-channel	Order no. 12-channel
0.5–10 µL	■ medium gray (for epT.I.P.S.® 20 µL)	0.5 µL	±12.0%	±0.06 µL	±8.0%	±0.04 µL	4926 000.018	4926 000.026
		1 µL	±8.0%	±0.08 µL	±5.0%	±0.05 µL		
		5 µL	±4.0%	±0.2 µL	±2.0%	±0.1 µL		
		10 µL	±2.0%	±0.2 µL	±1.0%	±0.1 µL		
10–100 µL	■ yellow (for epT.I.P.S.® 200 µL)	10 µL	±3.0%	±0.3 µL	±2.0%	±0.2 µL	4926 000.034	4926 000.042
		50 µL	±1.0%	±0.5 µL	±0.8%	±0.4 µL		
		100 µL	±0.8%	±0.8 µL	±0.3%	±0.3 µL		
30–300 µL	■ orange (for epT.I.P.S.® 300 µL)	30 µL	±3.0%	±0.9 µL	±1.0%	±0.3 µL	4926 000.050	4926 000.069
		150 µL	±1.0%	±1.5 µL	±0.5%	±0.75 µL		
		300 µL	±0.6%	±1.8 µL	±0.3%	±0.9 µL		

Eppendorf Reference® 2 (single-channel, fixed volume)

Volume	Color code	Systematic error*2		Random error*2		Order no.
1 µL	■ dark gray (for epT.I.P.S.® 10 µL)	±2.5%	±0.025 µL	±1.8%	±0.018 µL	4925 000.014
2 µL		±2.0%	±0.04 µL	±1.2%	±0.024 µL	4925 000.022
5 µL	■ medium gray (for epT.I.P.S.® 20 µL)	±1.2%	±0.06 µL	±0.6%	±0.03 µL	4925 000.030
10 µL		±1.0%	±0.1 µL	±0.5%	±0.05 µL	4925 000.049
20 µL	■ light gray (for epT.I.P.S.® 20 µL L)	±0.8%	±0.16 µL	±0.3%	±0.06 µL	4925 000.065
10 µL	■ yellow (for epT.I.P.S.® 200 µL)	±1.2%	±0.12 µL	±0.6%	±0.06 µL	4925 000.057
20 µL		±1.0%	±0.2 µL	±0.3%	±0.06 µL	4925 000.073
25 µL	■ blue (for epT.I.P.S.® 1,000 µL)	±1.0%	±0.25 µL	±0.3%	±0.075 µL	4925 000.081
50 µL		±0.7%	±0.35 µL	±0.3%	±0.15 µL	4925 000.090
100 µL		±0.6%	±0.6 µL	±0.2%	±0.2 µL	4925 000.103
200 µL		±0.6%	±1.2 µL	±0.2%	±0.4 µL	4925 000.111
200 µL	■ blue (for epT.I.P.S.® 1,000 µL)	±0.6%	±1.2 µL	±0.2%	±0.4 µL	4925 000.120
250 µL		±0.6%	±1.5 µL	±0.2%	±0.5 µL	4925 000.138
500 µL		±0.6%	±3.0 µL	±0.2%	±1.0 µL	4925 000.146
1,000 µL	■ red (for epT.I.P.S.® 2.5 mL)	±0.6%	±6.0 µL	±0.2%	±2.0 µL	4925 000.154
2 mL		±0.6%	±0.012 mL	±0.2%	±0.004 mL	4925 000.162
2.5 mL		±0.6%	±0.015 mL	±0.2%	±0.005 mL	4925 000.170

*1 All Eppendorf Reference® 2 multichannel variable volume pipettes include an epT.I.P.S.® box.

*2 The error data, according to EN ISO 8655, only apply if original Eppendorf tips are used. Technical specifications are subject to change. Errors and omissions excepted.

Accessories

Tip-Tub reagent reservoir, autoclavable reservoir for aspirating liquids with multichannel pipettes,
1 set = 10 reservoirs and 10 lids

Eppendorf TrackIT

Order no.

0030 058.607

3903 000.014

Eppendorf Reference® 2, 3-Pack, incl. epT.I.P.S.® Box and Eppendorf ballpoint pen

Option 1: 0.5–10 µL, 10–100 µL, 100–1,000 µL

Option 2: 2–20 µL yellow, 20–200 µL, 100–1,000 µL

Option 3: 100–1,000 µL, 0.5–5 mL, 1–10 mL

Order no.

4924 000.908

4924 000.916

4924 000.924

Eppendorf Xplorer®

Eppendorf Xplorer® (single-channel, variable volume, incl. charger)

Volume range	Color code	Volume	Systematic error*		Random error*		Order no.
0.5–10 µL	■ dark gray (for epT.I.P.S.® 20 µL)	1 µL	±2.5 %	±0.025 µL	±1.8 %	±0.018 µL	4861 000.015
		5 µL	±1.5 %	±0.075 µL	±0.8 %	±0.04 µL	
		10 µL	±1.0 %	±0.1 µL	±0.4 %	±0.04 µL	
5–100 µL	■ yellow (for epT.I.P.S.® 200 µL)	10 µL	±2.0 %	±0.2 µL	±1.0 %	±0.1 µL	4861 000.023
		50 µL	±1.0 %	±0.5 µL	±0.3 %	±0.15 µL	
		100 µL	±0.8 %	±0.8 µL	±0.2 %	±0.2 µL	
15–300 µL	■ orange (for epT.I.P.S.® 300 µL)	30 µL	±2.5 %	±0.75 µL	±0.7 %	±0.21 µL	4861 000.031
		150 µL	±1.0 %	±1.5 µL	±0.3 %	±0.45 µL	
		300 µL	±0.6 %	±1.8 µL	±0.2 %	±0.6 µL	
50–1,000 µL	■ blue (for epT.I.P.S.® 1,000 µL)	100 µL	±3.0 %	±3 µL	±0.6 %	±0.6 µL	4861 000.040
		500 µL	±1.0 %	±5 µL	±0.2 %	±1 µL	
		1,000 µL	±0.6 %	±6 µL	±0.2 %	±2 µL	
0.25–5 mL	■ purple (for epT.I.P.S.® 5 mL)	500 µL	±3.0 %	±15 µL	±0.6 %	±3 µL	4861 000.058
		2,500 µL	±1.2 %	±30 µL	±0.3 %	±6.25 µL	
		5,000 µL	±0.6 %	±30 µL	±0.15 %	±7.5 µL	
0.5–10 mL	■ turquoise (for epT.I.P.S.® 10 mL)	1,000 µL	±3.0 %	±30 µL	±0.6 %	±6 µL	4861 000.066
		5,000 µL	±0.8 %	±40 µL	±0.2 %	±10 µL	
		10,000 µL	±0.6 %	±60 µL	±0.15 %	±15 µL	

Eppendorf Xplorer® (multichannel, variable volume, incl. charger)

Volume range	Color code	Volume	Systematic error*		Random error*		Order no.	Order no.
							8-channel	12-channel
0.5–10 µL	■ medium gray (for epT.I.P.S.® 20 µL)	1 µL	±5.0 %	±0.05 µL	±3.0 %	±0.03 µL	4861 000.104	4861 000.112
		5 µL	±3.0 %	±0.15 µL	±1.5 %	±0.075 µL		
		10 µL	±2.0 %	±0.2 µL	±0.8 %	±0.08 µL		
5–100 µL	■ yellow (for epT.I.P.S.® 200 µL)	10 µL	±2.0 %	±0.2 µL	±2.0 %	±0.2 µL	4861 000.120	4861 000.139
		50 µL	±1.0 %	±0.5 µL	±0.8 %	±0.4 µL		
		100 µL	±0.8 %	±0.8 µL	±0.25 %	±0.25 µL		
15–300 µL	■ orange (for epT.I.P.S.® 300 µL)	30 µL	±2.5 %	±0.75 µL	±1.0 %	±0.3 µL	4861 000.147	4861 000.155
		150 µL	±1.0 %	±1.5 µL	±0.5 %	±0.75 µL		
		300 µL	±0.6 %	±1.8 µL	±0.25 %	±0.75 µL		
50–1,200 µL	■ medium green (for epT.I.P.S.® 1,200 µL)	120 µL	±6.0 %	±7.2 µL	±0.9 %	±1.08 µL	4861 000.163	4861 000.171
		600 µL	±2.7 %	±16.2 µL	±0.4 %	±2.4 µL		
		1,200 µL	±1.2 %	±14.4 µL	±0.3 %	±3.6 µL		

* The error data, according to EN ISO 8655, only apply if original Eppendorf tips are used. Technical specifications are subject to change. Errors and omissions excepted.

Eppendorf Xplorer® plus

Eppendorf Xplorer® plus (single-channel, variable volume, incl. charger)

Volume range	Color code	Volume	Systematic error*		Random error*		Order no.
0.5–10 µL	■ medium gray (for epT.I.P.S.® 20 µL)	1 µL	±2.5 %	±0.025 µL	±1.8 %	±0.018 µL	4861 000.708
		5 µL	±1.5 %	±0.075 µL	±0.8 %	±0.04 µL	
		10 µL	±1.0 %	±0.1 µL	±0.4 %	±0.04 µL	
5–100 µL	■ yellow (for epT.I.P.S.® 200 µL)	10 µL	±2.0 %	±0.2 µL	±1.0 %	±0.1 µL	4861 000.716
		50 µL	±1.0 %	±0.5 µL	±0.3 %	±0.15 µL	
		100 µL	±0.8 %	±0.8 µL	±0.2 %	±0.2 µL	
15–300 µL	■ orange (for epT.I.P.S.® 300 µL)	30 µL	±2.5 %	±0.75 µL	±0.7 %	±0.21 µL	4861 000.724
		150 µL	±1.0 %	±1.5 µL	±0.3 %	±0.45 µL	
		300 µL	±0.6 %	±1.8 µL	±0.2 %	±0.6 µL	
50–1,000 µL	■ blue (for epT.I.P.S.® 1,000 µL)	100 µL	±3.0 %	±3 µL	±0.6 %	±0.6 µL	4861 000.732
		500 µL	±1.0 %	±5 µL	±0.2 %	±1 µL	
		1,000 µL	±0.6 %	±6 µL	±0.2 %	±2 µL	
0.25–5 mL	■ purple (for epT.I.P.S.® 5 mL)	500 µL	±3.0 %	±15 µL	±0.6 %	±3 µL	4861 000.740
		2,500 µL	±1.2 %	±30 µL	±0.3 %	±6.25 µL	
		5,000 µL	±0.6 %	±30 µL	±0.15 %	±7.5 µL	
0.5–10 mL	■ turquoise (for epT.I.P.S.® 10 mL)	1,000 µL	±3.0 %	±30 µL	±0.6 %	±6 µL	4861 000.759
		5,000 µL	±0.8 %	±40 µL	±0.2 %	±10 µL	
		10,000 µL	±0.6 %	±60 µL	±0.15 %	±15 µL	

Eppendorf Xplorer® plus (multichannel, variable volume, incl. charger)

Volume range	Color code	Volume	Systematic error*		Random error*		Order no.	Order no.
							8-channel	12-channel
0.5–10 µL	■ medium gray (for epT.I.P.S.® 20 µL)	1 µL	±5.0 %	±0.05 µL	±3.0 %	±0.03 µL	4861 000.767	4861 000.775
		5 µL	±3.0 %	±0.15 µL	±1.5 %	±0.075 µL		
		10 µL	±2.0 %	±0.2 µL	±0.8 %	±0.08 µL		
5–100 µL	■ yellow (for epT.I.P.S.® 200 µL)	10 µL	±2.0 %	±0.2 µL	±2.0 %	±0.2 µL	4861 000.783	4861 000.791
		50 µL	±1.0 %	±0.5 µL	±0.8 %	±0.4 µL		
		100 µL	±0.8 %	±0.8 µL	±0.25 %	±0.25 µL		
15–300 µL	■ orange (for epT.I.P.S.® 300 µL)	30 µL	±2.5 %	±0.75 µL	±1.0 %	±0.3 µL	4861 000.805	4861 000.813
		150 µL	±1.0 %	±1.5 µL	±0.5 %	±0.75 µL		
		300 µL	±0.6 %	±1.8 µL	±0.25 %	±0.75 µL		
50–1,200 µL	■ medium green (for epT.I.P.S.® 1,200 µL)	120 µL	±6.0 %	±7.2 µL	±0.9 %	±1.08 µL	4861 000.821	4861 000.830
		600 µL	±2.7 %	±16.2 µL	±0.4 %	±2.4 µL		
		1,200 µL	±1.2 %	±14.4 µL	±0.3 %	±3.6 µL		

* The error data, according to EN ISO 8655, only apply if original Eppendorf tips are used. Technical specifications are subject to change. Errors and omissions excepted.

Eppendorf Easypet® 3

Description	Order no.
Easypet® 3 , incl. power supply and Lithium-polymer rechargeable battery, wall mount, shelf stand, and two membrane filters (unsterile) 0.45 µm	4430 000.018
Membrane filter , sterile, 0.45 µm, set of 5	4421 601.009
Membrane filter , sterile, 0.2 µm, pack of 5	4430 606.005
Lithium-polymer rechargeable battery for Easypet® 3	4430 605.009
Pipette Holder , for one Eppendorf Easypet® 3, for wall mounting, sticky tape included	4430 604.002

Eppendorf Pipet Helper®

Description	Order no.
Pipet Helper® , 0.1–100 mL	4423 000.010
Membrane filter , for Pipet Helper®, 3 µm, not sterile, (pack of 10)	4423 601.014

Eppendorf Pipette Holder System

Description	Order No.
Pipette Carousel 2 , for 6 Eppendorf Research®, Eppendorf Research® plus, Eppendorf Reference®, Eppendorf Reference® 2 or Biomaster®, additional pipette holders are optionally available	3116 000.015
Charger Carousel 2 , for 6 Eppendorf Xplorer® or Eppendorf Xplorer® plus, mains/power adapter included, additional charger shells and pipette holders are optionally available	3116 000.023
Charger Stand 2 , for one Eppendorf Xplorer® or Eppendorf Xplorer® plus, operated with mains/power adapter supplied with Eppendorf Xplorer® or Eppendorf Xplorer® plus	3116 000.031
Charger Stand 2 , for one Eppendorf Multipipette® E3/E3x or Multipipette® stream/Xstream, operated with mains/power adapter supplied with Eppendorf Multipipette® E3/E3x or Multipipette® stream/Xstream	3116 000.040
Pipette Stand 2 , for one Eppendorf Multipipette® M4, without charging functionality, additional pipette holders are optionally available	3116 000.058
Pipette Holder 2 , for one Eppendorf Research®, Eppendorf Research® plus, Eppendorf Reference®, Eppendorf Reference® 2 or Biomaster®, for Pipette Carousel 2 and Charger Carousel 2 or wall mounting, sticky tape included	3116 000.112
Pipette Holder 2 , for one Eppendorf Xplorer® or Eppendorf Xplorer® plus, for Pipette Carousel 2 or wall mounting, sticky tape included, without charging functionality	3116 000.120
Pipette Holder 2 , for one Eppendorf Multipipette® E3/E3x or Multipipette® stream/Xstream, for Pipette Carousel 2 or wall mounting, sticky tape included, without charging functionality	3116 000.139
Pipette Holder 2 , for one Eppendorf Multipipette® M4, for Pipette Carousel 2 and Charger Carousel 2 or wall mounting, sticky tape included, without charging functionality	3116 000.147
Charger Shell 2 , for one Eppendorf Xplorer® or Eppendorf Xplorer® plus, for Charger Carousel 2, with charging functionality	3116 602.007
Charger Shell 2 , for one Eppendorf Multipipette® E3/E3x or Multipipette® stream/Xstream, for Charger Carousel 2, with charging functionality	3116 603.003

Eppendorf Multipette® M4

Description	Order no.
Multipette® M4 incl. holder (for wall and/or pipette carousel)	4982 000.012
Multipette® M4 Starter Kit , Multipette® M4, Combitip Rack, Combitip assortment pack	4982 000.314

Multipette® E3/E3x

Description	Order no.
Multipette® E3 with charging adapter and 2 Combitips advanced® assortment packs	4987 000.010
Multipette® E3 with charger stand, 2 Combitips advanced® assortment packs, and charging stand	4987 000.371
Multipette® E3x with charging adapter and 2 Combitips advanced® assortment packs	4987 000.029
Multipette® E3x with charger stand, 2 Combitips advanced® assortment packs, and charging stand	4987 000.380

Combitips advanced®

Volume	Color code	Order no. Eppendorf Quality box of 100 pcs. (4 bags x 25 pcs.)	Order no. PCR clean* ¹ box of 100 pcs., 4 bags (zip-lock) x 25 pcs.	Order no. Eppendorf Biopur®* ² box of 100 pcs. (individually wrapped)	Order no. Forensic DNA Grade box of 100 pcs. (individually wrapped)
0.1 mL	□ White	0030 089.405	0030 089.766	0030 089.618	–
0.2 mL	■ Light blue	0030 089.413	0030 089.774	0030 089.626	–
0.5 mL	■ Purple	0030 089.421	0030 089.782	0030 089.634	–
1 mL	■ Yellow	0030 089.430	0030 089.790	0030 089.642	0030 089.855
2.5 mL	■ Green	0030 089.448	0030 089.804	0030 089.650	0030 089.863
5 mL	■ Blue	0030 089.456	0030 089.812	0030 089.669	0030 089.871
10 mL	■ Orange	0030 089.464	0030 089.820	0030 089.677	–
25 mL* ³	■ Red	0030 089.472	0030 089.839	0030 089.685	–
50 mL* ³	■ Light gray	0030 089.480	0030 089.847	0030 089.693	–
Accessories					
25 mL adapter (1 pc.)	■ Red	0030 089.715			
25 mL adapter (7 pcs.)	■ Red			0030 089.731	
50 mL adapter (1 pc.)	■ Light gray	0030 089.723			
50 mL adapter (7 pcs.)	■ Light gray			0030 089.740	
Combitip Rack (for 8 Combitips advanced®, 0.1 mL–10 mL)		0030 089.758			
Combitips advanced® Assortment pack (1 Combitip of each size, incl. adapters)		0030 089.936			

*¹ PCR clean: batch tested and certified to be free of: human DNA, DNase, RNase, PCR inhibitors

*² Eppendorf Biopur®: batch tested and certified to be sterile and free of: human and bacterial DNA, DNase, RNase, PCR inhibitors, ATP, pyrogen

*³ 4 boxes of 25 pcs. each. Each box contains an adapter.

Eppendorf Biomaster®

Description	Order no.
Biomaster® pipette kit , includes 1 Biomaster 4830 pipette with 1–20 µL continuous volume selection and 1 box of 96 Mastertips	4830 000.017
Mastertip® , includes ready-for-use piston, 5 racks of 96 tips	0030 001.320

Eppendorf Varipette®

Description	Order no.
Eppendorf Varipette® 4720 , with continuous volume selection in the 1–10 mL range	4720 000.011
Eppendorf Varitips® S Starter Kit , consisting of 100 Maxitips, 10 dispensing parts, 10 valves	0030 050.525
Eppendorf Varitips® P , to remove liquid from smaller vessels, 100 pieces	0030 048.130
Eppendorf Varitips® S dispensing part , 30 pieces	0030 050.533
Eppendorf Varitips® S , graduated, 200 pieces	0030 050.568
Eppendorf Varitips® S valve , 100 pieces	0030 050.541

Eppendorf Varispenser® 2/2x

Volume	Thread	Thread adapter incl.	Order no.
Varispenser® 2			
0.2–2 mL	GL 45	GL 25, GL 28/ S 28, GL 32, GL 38, S 40	4966 000.010
0.5–5 mL	GL 45	GL 25, GL 28/ S 28, GL 32, GL 38, S 40	4966 000.029
1–10 mL	GL 45	GL 25, GL 28/ S 28, GL 32, GL 38, S 40	4966 000.037
2.5–25 mL	GL 45	GL 32, GL 38, S 40	4966 000.045
5–50 mL	GL 45	GL 32, GL 38, S 40	4966 000.053
10–100 mL	GL 45	GL 32, GL 38, S 40	4966 000.061
Varispenser® 2x			
0.2–2 mL	GL 45	GL 25, GL 28/ S 28, GL 32, GL 38, S 40	4967 000.014
0.5–5 mL	GL 45	GL 25, GL 28/ S 28, GL 32, GL 38, S 40	4967 000.022
1–10 mL	GL 45	GL 25, GL 28/ S 28, GL 32, GL 38, S 40	4967 000.030
2.5–25 mL	GL 45	GL 32, GL 38, S 40	4967 000.049
5–50 mL	GL 45	GL 32, GL 38, S 40	4967 000.057
10–100 mL	GL 45	GL 32, GL 38, S 40	4967 000.065

Eppendorf Top Buret™

Description	Volume	With three adapters for outer diameter (mm)	Order no.
Eppendorf Top Buret™ M	2.5 mL per rotation	32, 38, 40	4965 000.017
Eppendorf Top Buret™ H	5.0 mL per rotation	32, 38, 40	4965 000.025
Dry tube			4960 851.000

epMotion®

Description	Order no.
epMotion® 96 , 96-channel, semi-automated electronic pipette for parallel 96 channel microplate processing (without iPod® controller), 100–240 V ±10 %/50–60 Hz ±5 %, 0.5–300 µL	5069 000.012
epMotion® 96 , 96-channel, with 2-position slider, semi-automated electronic pipette for parallel 96 channel microplate processing (without iPod® controller), 100–240 V ±10 %/50–60 Hz ±5 %, 0.5–300 µL	5069 000.110
epMotion® 96xl , semi-automated electronic pipette for parallel 96 channel microplate processing (without iPod controller), 5–1,000 µL	5069 000.209
epMotion® 96xl , with 2-position slider, semi-automated electronic pipette for parallel 96 channel microplate processing (without iPod controller), 5–1,000 µL	5069 000.306
epMotion® 5070 EasyCon , completely contained housing, system incl. Eppendorf EasyCon, epBlue™ software and LH assistant, mouse, waste box, 100–240 V ±10 %/50–60 Hz ±5 %, 1 µL–1 mL	5070 006.032
epMotion® 5070 MultiCon , completely contained housing, system incl. Eppendorf MultiCon, epBlue™ software and LH assistant, keyboard, mouse, waste box, 100–240 V ±10 %/50–60 Hz ±5 %, 1 µL–1 mL	5070 000.282
epMotion® 5070f EasyCon , system incl. Eppendorf EasyCon, epBlue™ software and LH assistant, mouse, waste box, 100–240 V ±10 %/50–60 Hz ±5 %, 1 µL–1 mL	5070 006.108
epMotion® 5070f MultiCon , system incl. Eppendorf MultiCon, epBlue™ software and LH assistant, keyboard, mouse, waste box, 100–240 V ±10 %/50–60 Hz ±5 %, 1 µL–1 mL	5070 000.283
epMotion® 5073l EasyCon , completely contained housing system incl. Eppendorf EasyCon, epBlue™ software and LH assistant, mouse, waste box, 100–240 V ±10 %/50–60 Hz ±5 %, 1 µL–1 mL	5073 000.582
epMotion® 5073l MultiCon , completely contained housing system incl. Eppendorf MultiCon, epBlue™ software and LH assistant, keyboard, mouse, waste box, 100–240 V ±10 %/50–60 Hz ±5 %, 1 µL–1 mL	5073 000.590
epMotion® 5073lc EasyCon , CleanCap, system incl. Eppendorf EasyCon, epBlue™ software and LH assistant, mouse, waste box, 100–240 V ±10 %/50–60 Hz ±5 %, 1 µL–1 mL	5073 000.604
epMotion® 5073lc MultiCon , CleanCap, system incl. Eppendorf MultiCon, epBlue™ software and LH assistant, keyboard, mouse, waste box, 100–240 V ±10 %/50–60 Hz ±5 %, 1 µL–1 mL	5073 000.612
epMotion® 5073m EasyCon , completely contained housing, system incl. Eppendorf EasyCon, MagSep module, Eppendorf ThermoMixer®, epBlue™ software and Prep assistant, mouse, waste box, 100–240 V ±10 %/50–60 Hz ±5 %, 1 µL–1 mL	5073 000.787
epMotion® 5073m MultiCon , completely contained housing, system incl. Eppendorf MultiCon, MagSep module, Eppendorf ThermoMixer®, epBlue™ software and Prep assistant, keyboard, mouse, waste box, 100–240 V ±10 %/50–60 Hz ±5 %, 1 µL–1 mL	5073 000.795
epMotion® 5073mc EasyCon , CleanCap, system incl. Eppendorf EasyCon, MagSep module, Eppendorf ThermoMixer®, CleanCap, epBlue™ software and Prep assistant, mouse, waste box, 100–240 V ±10 %/50–60 Hz ±5 %, 1 µL–1 mL	5073 000.809
epMotion® 5073mc MultiCon , CleanCap, system incl. Eppendorf MultiCon, MagSep module, Eppendorf ThermoMixer®, CleanCap, epBlue™ software and Prep assistant, keyboard, mouse, waste box, 100–240 V ±10 %/50–60 Hz ±5 %, 1 µL–1 mL	5073 000.817
epMotion® 5075l , basic device incl. epBlue™ software, mouse, waste box, 100–240 V ±10 %/50–60 Hz ±5 %, 1 µL–1 mL	5075 000.301
epMotion® 5075l with CleanCap , 100–240 V/50–60 Hz, incl. MultiCon all-in-one PC, epBlue software, LH Assistant, keyboard, mouse and waste box	on request
epMotion® 5075v , basic device incl. vacuum system, gripper, vac frame 2, vac frame holder, epBlue™ software, mouse, waste box, 100–240 V ±10 %/50–60 Hz ±5 %, 1 µL–1 mL	5075 000.303
epMotion® 5075v with CleanCap , with integrated vacuum system, 100–240 V/50–60 Hz, incl. MultiCon all-in-one PC, epBlue software, keyboard, mouse, gripper, Vac Frame 2, Vac Frame holder and waste box	on request
epMotion® 5075t , basic device incl. Eppendorf ThermoMixer®, epBlue™ software, mouse, waste box, 100–240 V ±10 %/50–60 Hz ±5 %, 1 µL–1 mL	5075 000.302
epMotion® 5075t with CleanCap , with integrated ThermoMixer, 100–240 V/50–60 Hz, incl. MultiCon all-in-one PC, epBlue software, keyboard, mouse and waste box	on request
epMotion® 5075vt , basic device incl. vacuum system, gripper, vac frame 2, vac frame holder, Eppendorf ThermoMixer®, epBlue™ software, mouse, waste box, 100–240 V ±10 %/50–60 Hz ±5 %, 1 µL–1 mL	5075 000.304
epMotion® 5075vt with CleanCap , with integrated vacuum system and ThermoMixer, 100–240 V/50–60 Hz, incl. MultiCon all-in-one PC, epBlue software, keyboard, mouse, gripper, Vac Frame 2, Vac Frame holder and waste box	on request
epMotion® 5075m , basic device incl. MagSep module, Eppendorf ThermoMixer®, epBlue™ software, mouse, waste box, 100–240 V ±10 %/50–60 Hz ±5 %, 1 µL–1 mL	5075 000.305
epMotion® 5075m with CleanCap , with integrated ThermoMixer and MagSep module, 100–240 V/50–60 Hz, incl. MultiCon all-in-one PC, epBlue software, PREP Assistant, PCR Assistant, keyboard, mouse and waste box	on request

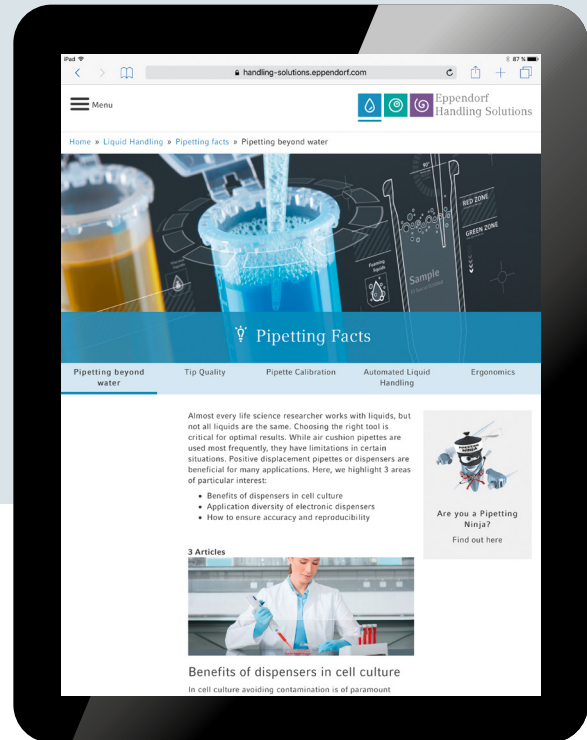
Eppendorf Handling Solutions

Are you working with problem liquids or do you wish to improve your pipetting skills?

We are developing products and solutions in the areas of Liquid Handling, Cell Handling and Sample Handling. Reproducible results, optimized workflows, pipetting skills, and the challenges in cell culture are just a few topics presented in this online sphere.



> Learn more about pipetting and have fun as well:
www.eppendorf.com/pipetting



Your local distributor: www.eppendorf.com/contact
 Eppendorf AG · Barkhausenweg 1 · 22339 Hamburg · Germany
eppendorf@eppendorf.com · www.eppendorf.com

www.eppendorf.com

epMotion® M5073/M5073c/5075m: This product and its use may be covered by one or more patents owned by Gen-Probe Incorporated. The purchase price for this product includes only limited, nontransferable rights under certain claims of certain patents owned by Gen-Probe Incorporated to use this product for research purposes only. No other rights are conveyed. Purchaser is not granted any rights under patents of Gen-Probe Incorporated to use this product for any commercial use. Further information regarding purchasing a license under patents of Gen-Probe Incorporated to use this product for any other purposes, including, without limitation, for commercial use, may be obtained by contacting Gen-Probe Incorporated, Attn: Business Development Department, 10210 Genetic Center Drive, San Diego, California 92121-4362, U.S.A.

Eppendorf®, the Eppendorf Brand Design, epServices® logo, epServices for Premium Performance®, Eppendorf Reference®, Eppendorf Pipet Helper®, Biomaster®, Biopur®, Multipette®, Eppendorf Research®, Eppendorf Xplorer®, PhysioCare Concept®, epT.I.P.S.®, Combitips advanced®, Varispenser®, Easypet®, ep Dualfilter T.I.P.S.®, Varipette®, Eppendorf Varitips®, Mastertip®, epMotion® and Eppendorf ThermoMixer® are registered trademarks of Eppendorf AG, Germany. Eppendorf TopBuret™, epBlue™, Eppendorf Quality™ and Eppendorf MagSep™ are trademarks of Eppendorf AG, Germany. U.S. Design Patents are listed on www.eppendorf.com/ip. All rights reserved, including graphics and pictures. Order No. APIP F12 020/GB3/5T/0817/SS0/STEF. Copyright © 2017 by Eppendorf AG.