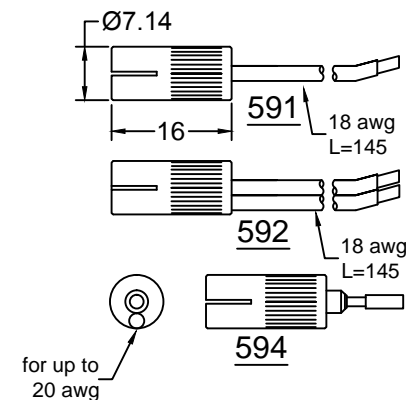
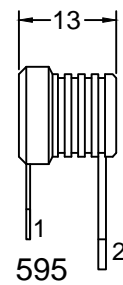
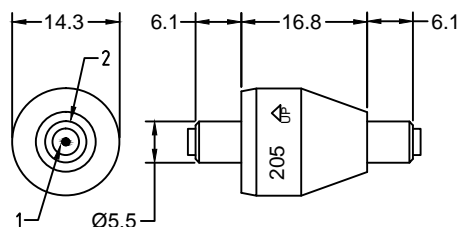


MERCOTAC 205 / 205-L / 205-H

CELCO PROFIL Srl

Vigonovo (VE) - Italy

Tel. +39 0499800211 Fax. +39 0499800255



MODELLO-MODEL		205	205-L	205-H
CANALI CONDUCTOR	N.	2	2	2
PORTATA CURRENT CAPACITY	A	4	4	4
POTENZA POWER RATING	KW	1	1	1
TENSIONE VOLTAGE RANGE	V (AC/DC)	0 - 250	0 - 250	0 - 250
MASSIMA FREQUENZA MAX FREQ.	MHz	200	200	200
RESISTENZA SERIE CONTACT RESIST.	m ohm	< 1	< 1	< 1
MAX VELOCITA' MAX SPEED	rpm	2000	1200	3600
MAX/MIN TEMP (sul corpo) MAX/MIN OPERATING TEMP. (body)	°C	60 / 7	60 / -29	60 / 7
TIPICA COPPIA ROTAZIONE ROTATION TORQUE	gr-cm	75	20	35
RESISTENZA ISOLAMENTO CIRCUIT SEPARATION RESIST.	M ohm	> 25	> 25	> 25

