

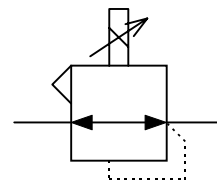
ELECTRONIC CONVERTER CURRENT TO PRESSURE (I/P) TYPE 422 FAILFREEZE

FEATURES

- Advanced electronic control
- Failfreeze operation (output pressure retained on power failure)
- Vibration immune
- IP65 environment protection
- ATEX approved

GENERAL DESCRIPTION

The 422 proportional I/P converter uses advanced electronic control to achieve outstanding performance. It offers failfreeze operation in addition to conventional I/P characteristics and its rugged construction, vibration immunity and weatherproofing make it ideal for field application.



Functional Symbol

TECHNICAL DATA

PNEUMATIC

| | |
|---------------------|--|
| •Output Signal | 0.2-1bar (3-15psig) low pressure unit; 0.2-8bar (3-120psig) high pressure unit; minimum outlet pressure less than 140mbar (2psig) |
| •Air Supply | Oil free, dry air, filtered to 5 microns; at least 0.7bar above maximum output pressure |
| •Flow Capacity | Up to 300NI/min (10scfm) |
| •Air Consumption | 0.2 l/min typical (0.007scfm) low pressure; 0.4 l/min typical (0.013scfm) high pressure |
| •Response Time | 6 seconds (low pressure unit)/ 12 seconds (high pressure unit) (from 10 to 90% of output pressure into a 2 litre load) |
| •Total Error | Max. error $\pm 0.5\%$ of span (low pressure), 0.5% (high pressure) (typical, independent error includes combined effect of non-linearity, hysteresis, deadzone and repeatability) |
| •Temperature Effect | Typically better than 1% span between -10°C and 60°C |
| •Supply Sensitivity | Negligible effect |
| •Connections | 1/4" NPT female standard (plus two integral 1/4" NPT gauge ports); others available on request |

PHYSICAL

| | |
|--------------------------------|--|
| •Operating Temperature | -20°C to $+70^{\circ}\text{C}$ |
| •I.P. Rating | IP65 |
| •Vibration | The unit possesses a high degree of immunity |
| •Electromagnetic Compatibility | Compliant and CE marked in accordance with the EC E.M.C. directive. Tested to standards: BS EN50082-2: 1995 BS EN50081-2: 1994 |
| •Material of Construction | Zinc diecasting passivated and epoxy painted, Verton glass/nylon cover; Nitrile diaphragms |
| •Mass | 800g |
| •Mounting Position | Operation in any attitude is possible without recalibration; integral surface mounting bracket provided for vertical mounting |

ELECTRICAL

| | |
|--------------------|---|
| •Electrical Signal | 4-20mA (two wire); load presents 6 volts ($\pm 0.5\text{V}$) constant voltage drop to the current source |
| •Failure Mode | Signal held at previous value when input signal falls below 2mA $\pm 0.5\text{mA}$; drift rate 0.02% in 30 seconds (mid-range) |
| •Connections | 30mm square connector DIN 43650 provided, mountable in four directions |



Thank you for reading this data sheet.

For pricing or for further information, please contact us at our UK Office, using the details below.



UK Office

Keison Products,

P.O. Box 2124, Chelmsford, Essex, CM1 3UP, England.

Tel: +44 (0)330 088 0560

Fax: +44 (0)1245 808399

Email: sales@keison.co.uk

Please note - Product designs and specifications are subject to change without notice. The user is responsible for determining the suitability of this product.