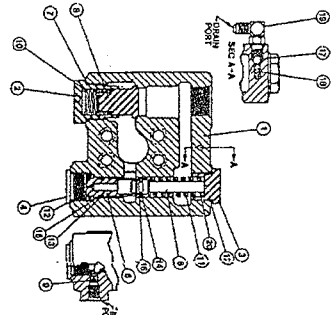
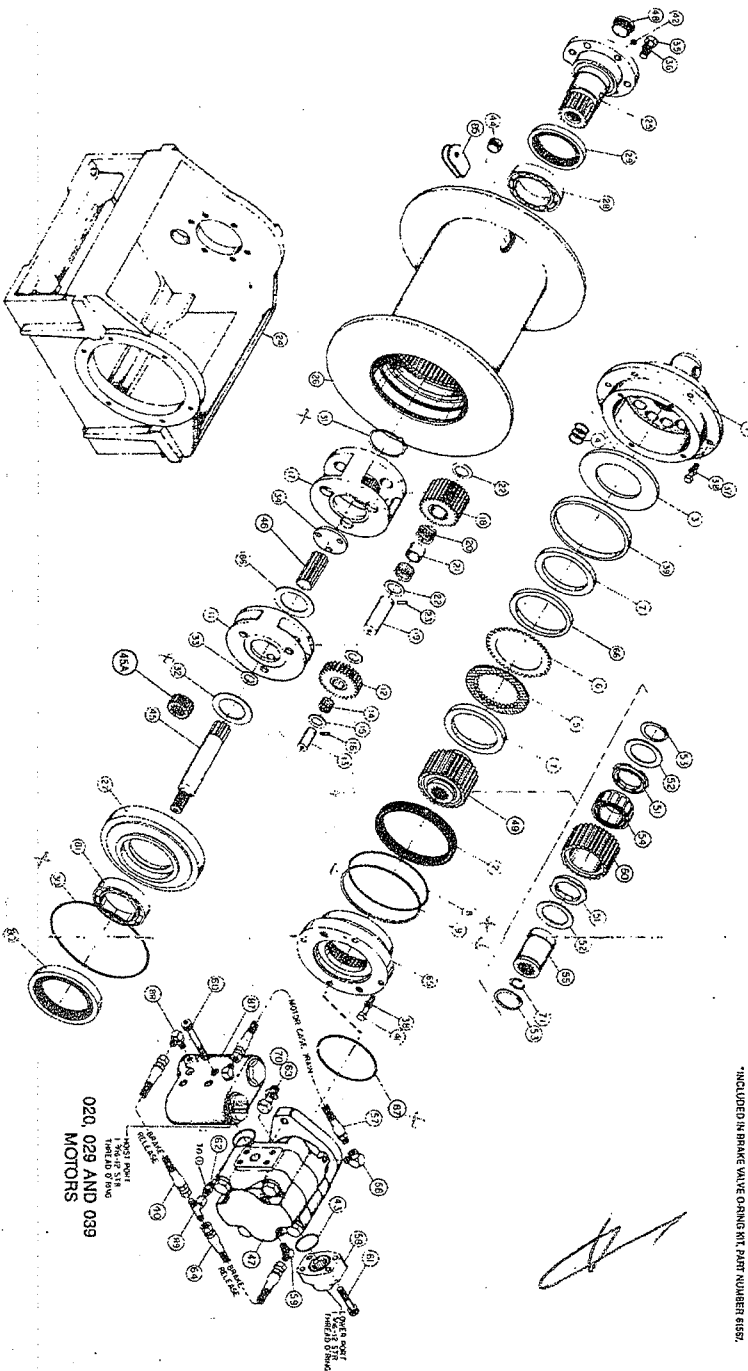


BRADEN B88A COMPONENTS

← CORRECT

SEAL KITS	
PART NO.	DESCRIPTION
82275	EQUAL SPEED WINCHES INCLUDES ITEMS 2, 4, 8, 26, 33, 41, 48 & 60
82276	HIGH SPEED REVERSE WINCHES INCLUDES ITEMS 26, 33, 39, 134 THRU 138, 142 & 143



ITEM	PART NO.	DESCRIPTION	QTY.
1	NSS	VALVE HOUSING	1
2	NSS	SPRING RETAINER	1
3	NSS	SPRING RETAINER	1
4	NSS	PISTON	1
5	NSS	PISTON	1
6	NSS	PISTON	1
7	NSS	PISTON	1
8	NSS	PISTON	1
9	NSS	PISTON	1
10	24180	CHECK VALVE SPRING	1
11	24182	CHECK VALVE SPRING	1
12	23801*	SPRING	1
13	24193*	SPRING	1
14	24194*	SPRING	1
15	24195*	SPRING	1
16	24196*	SPRING	1
17	24197*	SPRING	1
18	24198*	SPRING	1
19	25302	ELBOW FITTING	1
20	25301	VALVE SPRING SHIM	1

NSS - NOT SERVICED SEPARATELY OTHER COMPLETE BRAKE VALVE ASSEMBLY INCLUDED IN BRAKE VALVE KIT PART NUMBER 8159.

SEE BACK PAGE FOR HIGH SPEED REVERSE PARTS

020, 029 AND 039 MOTORS

ITEM	PART NO.	DESCRIPTION	QTY.
1	2840	BEAR CYLINDER	1
2	2842	BEAR	1
3	2844	BEAR	1
4	2846	PRESSURE PLATE	1
5	2848	SPRING	12
6	2850	SPRING	12
7	2852	SPRING	12
8	2854	SPRING	12
9	2856	SPRING	12
10	2858	SPRING	12
11	2860	SPRING	12
12	2862	SPRING	12
13	2864	SPRING	12
14	2866	SPRING	12
15	2868	SPRING	12
16	2870	SPRING	12
17	2872	SPRING	12
18	2874	SPRING	12
19	2876	SPRING	12
20	2878	SPRING	12
21	2880	SPRING	12
22	2882	SPRING	12
23	2884	SPRING	12
24	2886	SPRING	12
25	2888	SPRING	12
26	2890	SPRING	12
27	2892	SPRING	12
28	2894	SPRING	12
29	2896	SPRING	12
30	2898	SPRING	12
31	2900	SPRING	12
32	2902	SPRING	12
33	2904	SPRING	12
34	2906	SPRING	12
35	2908	SPRING	12
36	2910	SPRING	12
37	2912	SPRING	12
38	2914	SPRING	12
39	2916	SPRING	12
40	2918	SPRING	12
41	2920	SPRING	12
42	2922	SPRING	12
43	2924	SPRING	12
44	2926	SPRING	12
45	2928	SPRING	12
46	2930	SPRING	12
47	2932	SPRING	12
48	2934	SPRING	12
49	2936	SPRING	12
50	2938	SPRING	12
51	2940	SPRING	12
52	2942	SPRING	12
53	2944	SPRING	12
54	2946	SPRING	12
55	2948	SPRING	12
56	2950	SPRING	12
57	2952	SPRING	12
58	2954	SPRING	12
59	2956	SPRING	12
60	2958	SPRING	12
61	2960	SPRING	12
62	2962	SPRING	12
63	2964	SPRING	12
64	2966	SPRING	12
65	2968	SPRING	12
66	2970	SPRING	12
67	2972	SPRING	12
68	2974	SPRING	12
69	2976	SPRING	12
70	2978	SPRING	12
71	2980	SPRING	12
72	2982	SPRING	12
73	2984	SPRING	12
74	2986	SPRING	12
75	2988	SPRING	12
76	2990	SPRING	12
77	2992	SPRING	12
78	2994	SPRING	12
79	2996	SPRING	12
80	2998	SPRING	12
81	3000	SPRING	12
82	3002	SPRING	12
83	3004	SPRING	12
84	3006	SPRING	12
85	3008	SPRING	12
86	3010	SPRING	12
87	3012	SPRING	12
88	3014	SPRING	12
89	3016	SPRING	12
90	3018	SPRING	12
91	3020	SPRING	12
92	3022	SPRING	12
93	3024	SPRING	12
94	3026	SPRING	12
95	3028	SPRING	12
96	3030	SPRING	12
97	3032	SPRING	12
98	3034	SPRING	12
99	3036	SPRING	12
100	3038	SPRING	12

NSS - NOT SERVICED SEPARATELY OTHER COMPLETE BRAKE VALVE ASSEMBLY INCLUDED IN BRAKE VALVE KIT PART NUMBER 8159.

PARTS LIST

BRAKE VALVE ASSEMBLY (Item 87)			
ITEM	PART NO.	DESCRIPTION	QTY.
1	NSS	VALVE HOUSING	1
2	NSS	SPRING RETAINER	1
3	NSS	SPRING RETAINER	1
4	NSS	PLUG	1
5	NSS	SPOOL	1
6	NSS	DAMPER PISTON	1
7	24186*	O-RING	1
8	NSS	CHECK VALVE POPPET	1
9	24200	PILOT ORIFICE	1
10	24190	CHECK VALVE SPRING	1
11	24192	SPOOL SPRING	1
12	23601*	O-RING	2
13	24193*	O-RING	1
14	24194*	O-RING	1
15	24195*	BACK-UP RING	1
16	24196*	BACK-UP RING	1
17	21158	CHECK BALL (1/4 in.)	1
18	25480	CHECK BALL SPRING	1
19	25302	ELBOW FITTING	1
20	25661	VALVE SPRING SHIM	--

NSS - NOT SERVICED SEPARATELY. ORDER COMPLETE BRAKE VALVE ASSEMBLY.

* INCLUDED IN BRAKE VALVE O-RING KIT, PART NUMBER 61567.

BASIC MATERIAL LIST - EQUAL SPEED WINCHES			
ITEM	PART NO.	DESCRIPTION	QTY.
1	28840	BRAKE CYLINDER (BG8A)	1
	102934	BRAKE CYLINDER (BG8B)	1
2	25642	SEAL	1
3	25635	PRESSURE PLATE	1
	25644**	SPRING (BG8A)	1
4	25723**	SPRING (BG8B)	12
5	21036	FRICITION DISC	12
	21029	STEEL DISC (BG8A)	5
6	100027	STEEL DISC (BG8B)	6
7	25637	SPACER	6
8	24981	O-RING	2
9	25643	BACK-UP RING	1
	25512	PRIMARY PLANET CARRIER (23:1 RATIO & HIGH SPEED REVERSE)	1
11	25513	PRIMARY PLANET CARRIER (34:1 RATIO)	1
	25329	PRIMARY PLANET CARRIER (59:1 RATIO)	1
	26273	PRIMARY PLANET GEAR (23:1 RATIO & HIGH SPEED REVERSE)	1
12	26275	PRIMARY PLANET GEAR (34:1 RATIO)	3
	26271	PRIMARY PLANET GEAR (59:1 RATIO)	3
13	25332	PRIMARY PLANET GEAR SHAFT	3
14	25333	ROLLER BEARING	3
15	24914	THRUST WASHER	3
16	12026	ROLLPIN	6
	25514	OUTPUT PLANET CARRIER (23:1, 34:1 RATIO & HIGH SPEED REVERSE)	3
17	25202	OUTPUT PLANET CARRIER (59:1 RATIO)	1
	26274	OUTPUT PLANET GEAR (23:1, 34:1 RATIO & HIGH SPEED REVERSE)	1
18	26272	OUTPUT PLANET GEAR (59:1 RATIO)	3
19	25666	PLANET GEAR SHAFT	3
20	24175	ROLLER BEARING	3
21	24890	BEARING SPACER	6
22	25361	THRUST WASHER	3
23	21049	ROLLPIN	6
24	25977	BASE	3
	28843	BEARING SUPPORT (STANDARD)	1
25	29685	BEARING SUPPORT (H)	1
	28842	CABLE DRUM (BG8A)	1
26	103312	CABLE DRUM (BG8B)	1
	28841	CABLE DRUM CLOSURE (BG8A)	1
27	103313	CABLE DRUM CLOSURE (BG8B)	1
28	25299	BEARING (2 USED ON HIGH SPEED REVERSE)	1
29	28844	OIL SEAL (2 USED ON HIGH SPEED REVERSE)	1
30	22358	O-RING (BG8A ONLY)	1
31	25528	SNAP RING	1
32	25300	THRUST WASHER	1
	27426	THRUST WASHER (23:1 RATIO) NOT USED WITH 071 MOTOR	1
33	25942	THRUST WASHER (34:1 RATIO)	1
	24913	THRUST WASHER (59:1 RATIO)	1
34	25542	THRUST PLATE	1
35	104174	CAPSCREW (1/2 - 13 X 1 1/4 G8 Z)	1
36	11026	LOCKWASHER (1/2)	6
37	104132	CAPSCREW (3/8 - 16 X 1 1/4 G8 Z)	6
38	27152	LOCKWASHER (3/8)	6
39	25636	PISTON BACK-UP RING	10
41	104311	CAPSCREW (3/8 - 16 X 1 1/4 G8 Z)	1
42	18062	VENT PLUG	4
	22374	PLUG (HIGH SPEED REVERSE)	1
44	32411	O-RING FLUSH PLUG (-8)	1
	102928	PRIMARY SUN GEAR (23:1 & 59:1 RATIO)	1
45	25511	PRIMARY SUN GEAR (34:1 RATIO)	1
45A	25507	PRIMARY SUN GEAR ADAPTER (23:1 RATIO ONLY)	1
	25509	OUTPUT SUN GEAR (23:1, 34:1 RATIO & HIGH SPEED REVERSE)	1
46	24891	OUTPUT SUN GEAR (59:1 RATIO)	1
	25386	MOTOR (020)	1
47	25385	MOTOR (029)	1
	25515	MOTOR (039)	1
	40258	MOTOR (071)	1
48	24420	PLUG	1
	25958	SIGHT GAUGE (-1 PERSONNEL HANDLING WINCHES)	1
49	81987	BRAKE CLUTCH ASSEMBLY (INCLUDES ITEMS 50 THRU 55 & 71)	1
50	NSS*	OUTER BRAKE RACE	1
51	27684	SPRAG BEARING	1
52	24581	THRUST BEARING	2
53	12034	RETAINING RING	2
54	NSS*	SPRAG CLUTCH	2
55	NSS*	INNER BRAKE RACE	1
	25920	MOTOR SUPPORT (BG8A)	1
65	102933	MOTOR SUPPORT (BG8B)	1
66	24892	BRAKE SPACER	1
67	21063	O-RING	2
71	32115	INTERNAL RETAINING RING	1
	28994	OIL SEAL (BG8A)	1
80	22818	OIL SEAL (BG8B)	1
81	72385	BEARING	1
83	24934	RETAINING RING (23:1 RATIO)	1
	74780	CABLE ANCHOR - STANDARD (3/8 TO 9/16)	2
85	24119	CABLE ANCHOR (1/4 & 5/16)	1
	25095	CABLE ANCHOR (5/8 & 3/4 POLY ROPE ONLY)	1
86	76142	THRUST WASHER	1
99	100200	SPRING SPACER (BG8B ONLY)	1

* NSS - NOT SERVICED SEPARATELY. ORDER COMPLETE BRAKE CLUTCH ASSEMBLY.
 ** DO NOT REPLACE INDIVIDUAL SPRINGS. REPLACE ALL SPRINGS AS A SET.