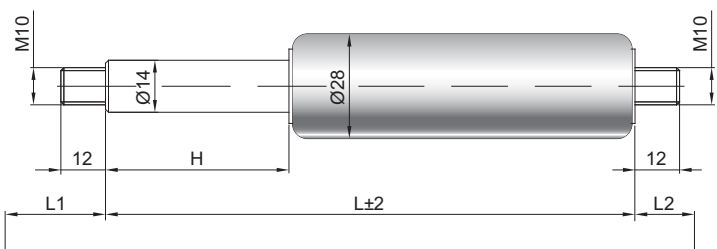


Gasdruckfeder G 14-28

Ausschubkraft F1 150 - 2500 Newton
Progression 40 %
Kolbenstange Ø 14 mm, Stahl hartverchromt
Druckrohr Ø 28 mm, Stahl schwarz lackiert
Anschlüsse Stahl blau verzinkt

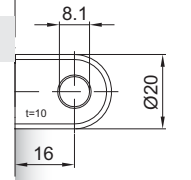
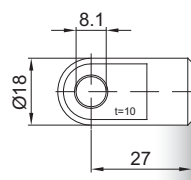
GZ 12

GZ 12



AU 27

AB 16



Details

Standardhöhe H (mm)
 50, 60, 80, 100, 120, 150, 160, 180,
 200, 210, 220, 250, 300, 350, 400, 450,
 500, 550, 600, 650, 700

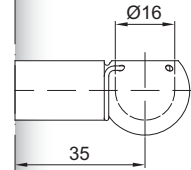
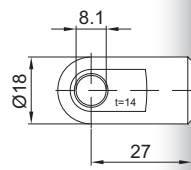
Standardlänge GL
 $L = 2 \times H + 107$
 $GL = L + L1 + L2$

- Extras**
- 1 - Abstreifer
 - 2 - Quervertil
 - 4 - Fettkammer
 - 5 - Ventil
 - 6 - Schutzrohr
 - 7 - schwimmender Kolben
 - 8 - Einsichtsicherung
 - B3 - Dichtsystem
 - NT - Niedertemperatursausführung
 - HT - Hochtemperatursausführung
 - RK - Reibelement

Weitere **Anschlüsse** finden Sie hier

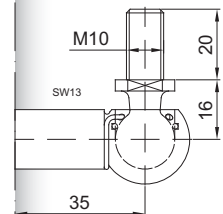
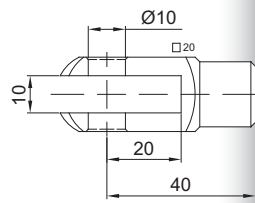
Nur am Zylinder möglich

AS 27



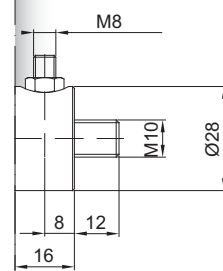
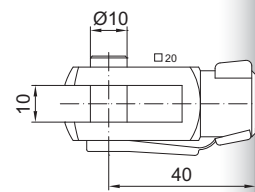
PF 35

GA 40



WG 35

GG 40



QV GZ

AG 43

